

# Magnum Compound Microscope

P1 of 2

The Magnum binocular compound microscope comes with a choice of objectives and a quintuple reversed nosepiece. It features a robust, sturdy T-shaped base, designed to offer maximum stability. Modern, ergonomic features, such as a 30° inclined eyepiece tube, ensure a comfortable viewing position.

This biological microscope is ideal for routine use in general QC conditions and routine examinations of slide mounted samples. Optional accessories include a polarising set, phase contrast sets, HBO 100W fluorescent attachment, and dark-field condensers.

## Specifications

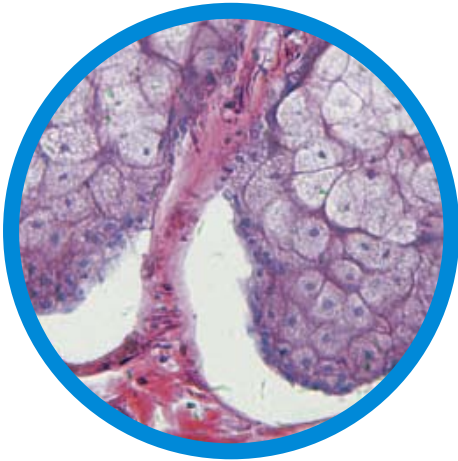
Cat. No.	2621.0000M	2622.0000M	2629.0000M	2638.0000M	2721.0000M
<b>Optical Head</b>	Binocular, inclined at 30°				Trinocular with photo port, inclined at 30°
<b>Siedentopf</b>	Yes (55 to 75 mm interpupillary distance)				
<b>Dioptre</b>	Dioptric adjustment on one eyepiece tube				
<b>Eyepieces</b>	10x / 20 mm widefield				
<b>Turret Format</b>	Quintuple				
<b>Objectives</b>	4x, 10x, 40x, 100x (oil) Semi-Plan Achromatic	4x, 10x, 40x, 100x Plan Achromatic Objective	4x, 10x, 40x, 100x Infinity Corrected Plan Achromatic	10x, 20x, 40x, 100x Phase Contrast Objectives	4x, 10x, 40x, 100x Semi-Plan Achromatic
<b>Objective Type</b>	Finite		Infinite	Finite	
<b>Condenser</b>	Brightfield Abbe - NA 1.25, pre-condenser with field and Iris diaphragm				
<b>Stage Size</b>	Built-in mechanical, 210 x 140 mm with slide holder				
<b>Focusing</b>	Coaxial coarse and fine with stop tension adjustment ring				
<b>Illumination</b>	3W LED with intensity control, full Köhler illumination				
<b>Package</b>	Blue and green filter, 2 spare fuses, immersion oil (10 ml), soft rubber eyecups, dust cover, tension tool and instruction manual				
<b>Additional Features</b>	Dual slide holder, ergonomic carry handle				

## Accessories

Cat. No.	Description
<b>2757.2060M</b>	Ceti Magnum and Versus microscope 0.5x camera mount
<b>2757.2050M</b>	Ceti Magnum and Versus microscope 1x camera mount
<b>9558.0005</b>	Ceti WFHD5C 5 MP microscope camera with HDMI, Wi-Fi and SD card
<b>9556.5600M</b>	Ceti 5 MP Digi-Pad microscope tablet camera with 9.7 inch 1080P screen, 15 FPS capture/record software, HDMI, Wi-Fi, Bluetooth, x2 USB and TF card expansion
<b>9558.0063</b>	Ceti 6.3 MP digital microscope camera with capture software
<b>9558.0018</b>	Ceti WFHD5C 5 MP microscope camera with HDMI, Wi-Fi and SD card

Features a robust, sturdy T-shaped base,  
**designed to offer maximum stability**

Full **Köhler illumination**



## Specifications

Cat. No.	2721.7000M	2722.0000M	2729.0000M	2738.0000M	2753.0000M
<b>Optical Head</b>	Trinocular with photo port, inclined at 30°				
<b>Siedentopf</b>	Yes (55 to 75 mm interpupillary distance)				
<b>Dioptr</b>	Dioptric adjustment on one eyepiece tube				
<b>Eyepieces</b>	10x / 20 mm widefield				
<b>Turret Format</b>	Quintuple				
<b>Objectives</b>	4x, 10x, 40x, 100x Infinity Corrected Plan Achromatic	4x, 10x, 40x, 100x Plan Achromatic Objectives	4x, 10x, 40x, 100x Infinity Corrected Plan Achromatic	PH10x, PH20x, PH40x, PH100x Phase Contrast	4x, 10x, 40x, 60x Infinity Corrected Plan Achromatic
<b>Objective Type</b>	Infinite	Finite	Infinite	Finite	Infinite
<b>Condenser</b>	Brightfield Abbe - NA 1.25, pre-condenser with field and Iris diaphragm			Pre-condenser with field diaphragm	Pre-condenser with field diaphragm
<b>Stage Size</b>	Built-in mechanical, 210 x 140mm with slide holder				Round, centrable with scale and two stage clips
<b>Focusing</b>	Coaxial coarse and fine with stop tension adjustment ring				
<b>Illumination</b>	3W LED with intensity control, full Köhler illumination				
<b>Package</b>	Blue and green filter, 2 spare fuses, immersion oil (10 ml), soft rubber eyecups, dust cover, tension tool and instruction manual				
<b>Additional Features</b>	Dual slide holder, ergonomic carry handle				
<b>Special Features</b>	–	Rechargeable	–	Phase contrast turret	Polariser

## Epi-fluorescence Model Specifications

Cat. No.	2777.0000M
<b>Optical Head</b>	Trinocular with photo port, inclined at 30°
<b>Siedentopf</b>	Yes (55 to 75mm interpupillary distance)
<b>Dioptr</b>	Dioptric adjustment on one eyepiece
<b>Eyepieces</b>	10x / 20 mm widefield
<b>Turret Format</b>	Quintuple
<b>Objectives</b>	4x, 10x, 40x, 100x (oil) Infinity Corrected Plan Achromatic
<b>Objective Type</b>	Infinite
<b>Condenser</b>	Pre-condenser with focusable/centrable iris field diaphragm
<b>Stage Size</b>	Built-in mechanical, 210 x 140mm with slide holder
<b>Focusing</b>	Coaxial coarse and fine with stop tension adjustment ring
<b>Illumination</b>	3W LED with intensity control, full Köhler illumination
<b>Illumination - reflected</b>	3.6W LED
<b>Package</b>	Blue and green filter, 2 spare fuses, immersion oil (10 ml), soft rubber eyecups, dust cover, tension tool and instruction manual
<b>Additional Features</b>	Dual slide holder, ergonomic carry handle
<b>Special Features</b>	Fluorescence, blue/green/ultraviolet/violet excitation