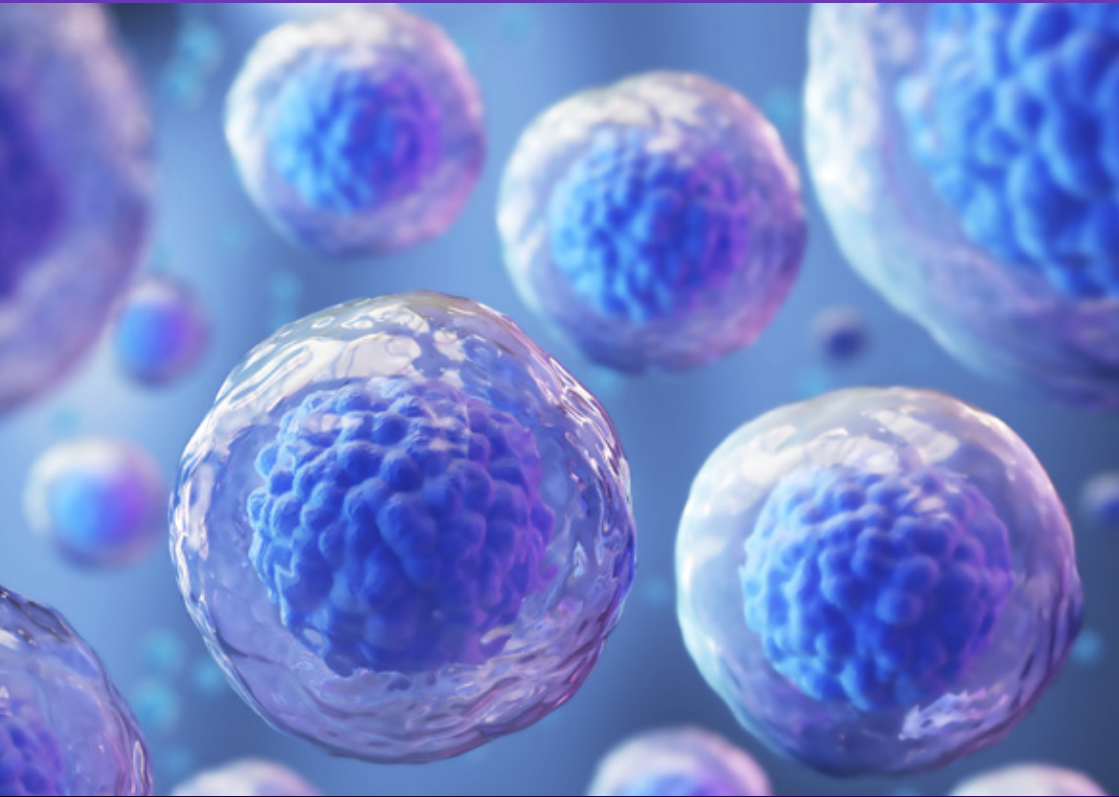


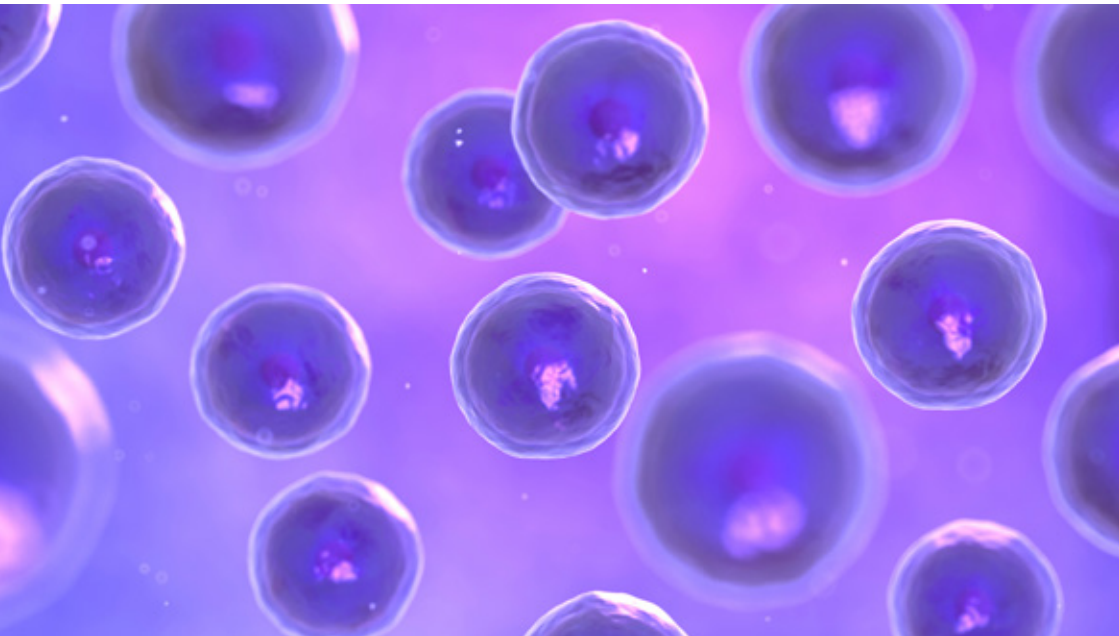
# Solutions for Cell Biology



# Solutions for Cell Biology

Regardless of your area of research, Calibre Scientific has an extensive portfolio of premium cell biology equipment, consumables, reagents and services to provide you with the tools you need to accelerate your work. Whether you require precise instrumentation for cell counting or analysis, reliable cryo-storage solutions, or high-quality consumables such as flasks and pipette tips, we have you covered.

Our Product and Application Specialists are on hand to ensure that you have the right tools for your applications, and Calibre Scientific Services provides a comprehensive suite of service solutions to help keep your equipment and instrumentation running reliably and accurately.





**Grow**

**Prepare**

**Analyse**

**Store**

To discuss your requirements with one of our team, please contact us at:  
[\*\*enquiriesuk@calibrescientific.com\*\*](mailto:enquiriesuk@calibrescientific.com)

# Cell Biology – Grow

Here are some of the most popular products and services from our comprehensive range to support cell isolation and growth.

CO<sub>2</sub>, Trigas,  
and Normoxic  
Incubators



3D Cell Culture



Installation,  
Maintenance,  
and Validation



*E.coli*  
Growth Media



Antibiotics



Wide range of  
roller culture  
apparatus



Buffers,  
Supplements,  
Media, FBS  
and other Sera



Physoxia / hypoxia  
workstations



Don't see what you need? Please get in touch to discuss your requirements:  
[enquiriesuk@calibrescientific.com](mailto:enquiriesuk@calibrescientific.com)

# Cell Biology – Grow: Highlights

## ReCO<sub>2</sub>ver Plus: Rapid recovery CO<sub>2</sub> incubator

- Innovative design for precision cell culture conditions
- Ultrasonic humidification for active humidity control
- Rapid recovery to the set points (under 6 minutes) for temperature, CO<sub>2</sub> and relative humidity after door openings
- Maximum biosafety and biocontainment
- H<sub>2</sub>O<sub>2</sub> decontamination and automatic CO<sub>2</sub> supply switchover



## ClinoStar 2: 3D culture incubator

- Promotes growth and maintenance of large 3D tissue mimetic structures (spheroids, organoids or other aggregates)
- Physiologically relevant growth environment
- CO<sub>2</sub> control with optional O<sub>2</sub> regulation (down to 2%)
- Integrated cameras and remote / Cloud based access to monitor and adjust culture parameters



## Baker InVivO2 300 Physoxia Workstation

- The most compact benchtop physoxia / hypoxia workstation with interlock
- Study complex cell interactions under physiologically relevant conditions
- An affordable and user friendly way to add low oxygen workflows to your research



## Serum and media with a personal service

We've supplied serum and other cell culture reagents to the research community for over 25 years. Our Application Specialists provide dedicated support through your testing and purchasing process. Our portfolio includes buffers, supplements and antibiotics as well as media and FBS / other sera. Free batch testing helps you find the batch that works best for your cells.



# Cell Biology – Prepare

Find what you need for cell preparation...

From automated cell counters to energy-efficient ULT freezers, and liquid handling solutions.

**Award-Winning  
Automated Cell  
Counters**



**Disposable  
Haemocytometers**



**Maintenance,  
Validation, and  
Calibration  
Solutions**



**2D Barcoded  
Storage**



Don't see what you need? Please get in touch to discuss your requirements:  
**[enquiriesuk@calibrescientific.com](mailto:enquiriesuk@calibrescientific.com)**

# Cell Biology – Prepare: Highlights

## LUNA automated cell counters

- Multi award winning compact standalone systems
- Brightfield only LUNA III with autofocus and machine learning cell detection
- Dual fluorescence / brightfield LUNA FL and LUNA FX7 models
- Both disposable and sustainable reusable slides are available
- Optional bioprocess and 21 CFR part 11 compliance on LUNA FX7



## Haier Biomedical LX-155T500R Refrigerated Centrifuge

- High-capacity processing, powerful refrigeration, and advanced safety features
- Max. capacity 4 x 500 ml; speed range 500-15,500 rpm (rotor dependent)
- Glove-friendly touchscreen, 1000 program recall, and a wide choice of rotors
- Maintenance, validation, and calibration solutions available through Calibre Scientific Services



## LVL technologies secure 2D barcoded tube storage

- Maximum sample traceability, with customisation available
- Tube volumes from 200 µl to 8,000 µl
- Leakproof secure storage, IATA certified
- Storage down to -196 °C (LN<sub>2</sub>)
- Standard and high-density racks, automation compatible
- Associated accessories such as decappers/cappers, barcode readers, and tube laser marker



## Liquipette® Disposable Pasteur pipettes

- High quality pipettes for consistent results
- Manufactured from virgin LDPE, free from phthalate and silicone
- Available sterile and non-sterile
- 14 different styles including fine points, long-lengths and small bulb



# Cell Biology – Analyse

We provide many tools for cellular analysis, from live cell imaging to cell proliferation assays and microplate readers.

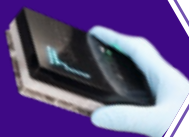
In Incubator  
Live Cell  
Imaging



Automated  
Monitoring of  
Barrier Function



Real-time  
Cellular O<sub>2</sub>  
Consumption  
monitoring



Proliferation  
Assays



Don't see what you need? Please get in touch to discuss your requirements:  
[enquiriesuk@calibrescientific.com](mailto:enquiriesuk@calibrescientific.com)



# Cell Biology – Analyse: Highlights

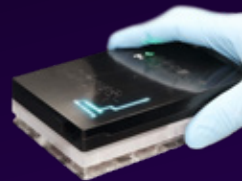
## zenCELL owl: In incubator/workstation brightfield microscope

- Enables remote monitoring of cell cultures from within the incubator
- Just 18 x 10.5 x 18 cm in size
- Monitor every well of a 24 well plate
- Cell confluence, cell number and well images are recorded every 4 minutes



## Resipher: Real-time oxygen consumption rate (OCR) monitoring system

- Turns a standard 96 well plate into a precise real-time oxygen consumption reader
- Cloud-based platform for remote visualisation and easy sharing of data
- Continuously monitor cell culture oxygen consumption within an incubator or workstation
- Ultra-sensitive dissolved oxygen sensors



## Baseclick cell proliferation assays

- Increased selectivity and sensitivity in comparison to BrdU
- Simple, fast and reliable assays
- Highly sensitive and cost-effective
- Assays for imaging, HTS, and Flow Cytometry



# Cell Biology – Store

Products, systems, and services to ensure that your biological materials are stored securely.



Don't see what you need? Please get in touch to discuss your requirements:  
[enquiriesuk@calibrescientific.com](mailto:enquiriesuk@calibrescientific.com)

# Cell Biology – Store: Highlights

## Stirling Ultracold energy efficient VAULT100 (780L) ULT freezer

- First ULT with a temperature range of -20 to -100 °C and unsurpassed temperature uniformity and stability
- 5.8 kWh/day at 80 °C (steady state)
- Designed to deliver lower lifetime cost of ownership
- Large sample storage volume per square metre of floor space
- Large user interface display with onboard predictive analytics and freezer diagnostics



## Liquid Nitrogen gas generators

- Produce, on demand, LN<sub>2</sub> from ambient air
- Systems available to deliver from 10 L/day up to 80 L/day
- Eliminates the cost and hassle of buying liquid nitrogen
- Air cooled and water cooled versions available



## Calibre Scientific Services

Calibre Scientific Services has many years' experience installing, maintaining, repairing, calibrating and validating both LN<sub>2</sub> storage units and LN<sub>2</sub> back up systems. We also offer a wide range of service solutions to help keep your cold storage equipment operating accurately and reliably. For laboratories storing critical or valuable samples, we can assist with remote real-time monitoring systems.

We deliver flexible, bespoke solutions tailored to meet the unique needs of each customer.

**Get in touch to find out how we can support your scientific endeavours.**



**Calibre Scientific UK**  
Unit 5A, R-Evolution @ The Advanced Manufacturing Park  
Selden Way, Rotherham S60 5XA