

TECHNICAL DATA SHEET

Deltaswab tube with ViCUM[®] media and flocked swab

code 304238KF

code	description	breakpoint	case quantity	case weight	case volume
304238KF	2 ml ViCUM [®] + standard flocked swab	80 mm	6 x 100	8.35	0.056

Tube with media: Directive 98/79/CE on "in vitro" diagnostic on medical devices

Swab: Directive 93/42/EEC on medical devices



INTENDED USE - DESCRIPTION

The kit consists of :

- A tube containing 2 ml of ViCUM[®] universal liquid transport media.
- A flocked swab packaged in a peel-pack.
- Presentation of the kit in a plastic flow pack.

Swab: sterile by radiation (R).

Tube with media: sterile by filtration.

ViCUM[®] is a universal liquid transport media formulated with a solution of balanced salts, bovine serum albumin, HEPES buffer, antibiotics and appropriate antifungals and preservatives, with a pH that allows the viability of viruses, Chlamydia, Mycoplasma and ureaplasma. It contains phenol red and includes antibiotics that inhibit the growth of bacteria and fungi, ensuring the adequacy of sample recovery.

Each tube contains glass beads to facilitate cell lysis, sample homogeneity and maximise elution. Designed for cell culture, antigenic viral detection studies and genomic PCR amplification techniques.

Tube measurements

length	Ø tube	Ø cap
82.6 mm	13 mm	16.6 mm

Swab measurements

Length: 152 mm

WRITTEN	VERIFIED	AUTHORISED
Pascal Montoya Marketing Department	Anna Mir Technical, RA, Quality & Environment Director	Mònica Torras Sales & Marketing Director

TECHNICAL DATA SHEET

Deltaswab tube with ViCUM[®] media and flocked swab

code 304238KF

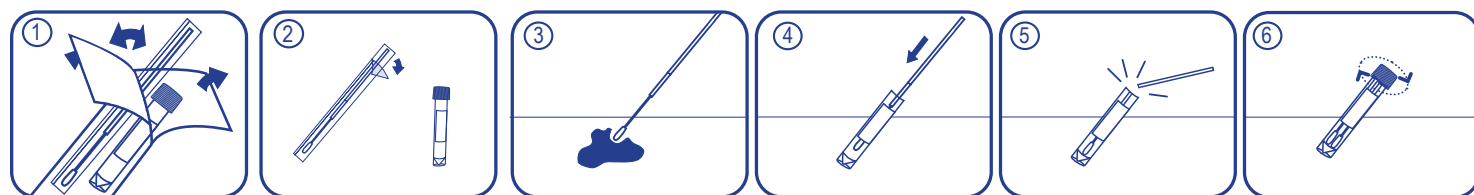
FEATURES AND BENEFITS OF THE DELTASWAB SYSTEM

- Compatible with new automation equipment for inoculation and seeding of samples.
- Compatible with molecular diagnostic techniques.
- Facilitates the collection, transport and subsequent treatment of microbiological samples.
- Greater reliability in sample recovery: high absorption and elution capacity of the new Deltaswab flocked swab.
- Greater viability of the sample, as it remains completely suspended in the media.
- Different homogeneous inoculums can be obtained from the same sample.
- Adapts to any work protocol.
- Minimises possible cross-contamination due to less handling and maximum watertightness.
- Greater comfort for the user: conical bottom that facilitates agitation and greater stability of the tube with skirt.
- Increased patient comfort thanks to the softer swab cover.
- Standardises sample reception in microbiology laboratories.
- Facilitates manual sowing.
- Allows direct extension on the slide, as it does not contain the agar media.
- Ensures proper transport and storage of samples both at room temperature (20 - 25 °C) and refrigerated temperature (4 - 8 °C).

FEATURES AND BENEFITS FLOCKED SWAB

- Maximum reliability and practicality of the breaking point.
- Support made of polystyrene --> Optimum safety.
- Head made of flocked polyester --> Greater sample absorption and elution of the sample in the medium.
- Maximum adaptability, wide range.
- Maximum comfort: anatomical and ergonomic design.

INSTRUCTIONS FOR USE



1. Open the flow-pack of the kit with both hands by pulling it to opposite sides.
2. Shake the bottle gently.
3. Open the peel-pack of the brush and take the sample.
4. Open the tube with the other hand and insert the swab to the bottom so that it is covered with the media. Align the breaking point at the same level as the tube by pressing down slightly on the swab.
5. Break the swab at its breaking point by holding it at the top and pressing it lightly on the inside edge of the tube.
6. Discard the top of the stick, screw on the stopper and shake to elute the sample in the middle.

WRITTEN	VERIFIED	AUTHORISED
Pascal Montoya Marketing Department	Anna Mir Technical, RA, Quality & Environment Director	Mònica Torras Sales & Marketing Director

TECHNICAL DATA SHEET

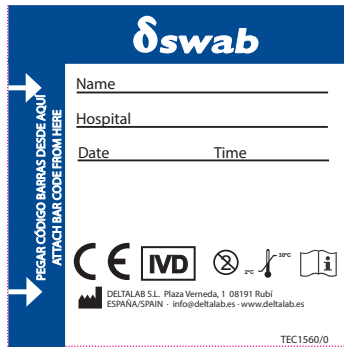
Deltaswab tube with ViCUM[®] media and flocked swab

code 304238KF

TUBE AND SWAB KIT

code	description	cap colour (indicates media)
304238KF	2 ml ViCUM [®] + standard flocked swab	●

LABEL DESIGN



WRITTEN	VERIFIED	AUTHORISED
Pascal Montoya Marketing Department	Anna Mir Technical, RA, Quality & Environment Director	Mònica Torras Sales & Marketing Director

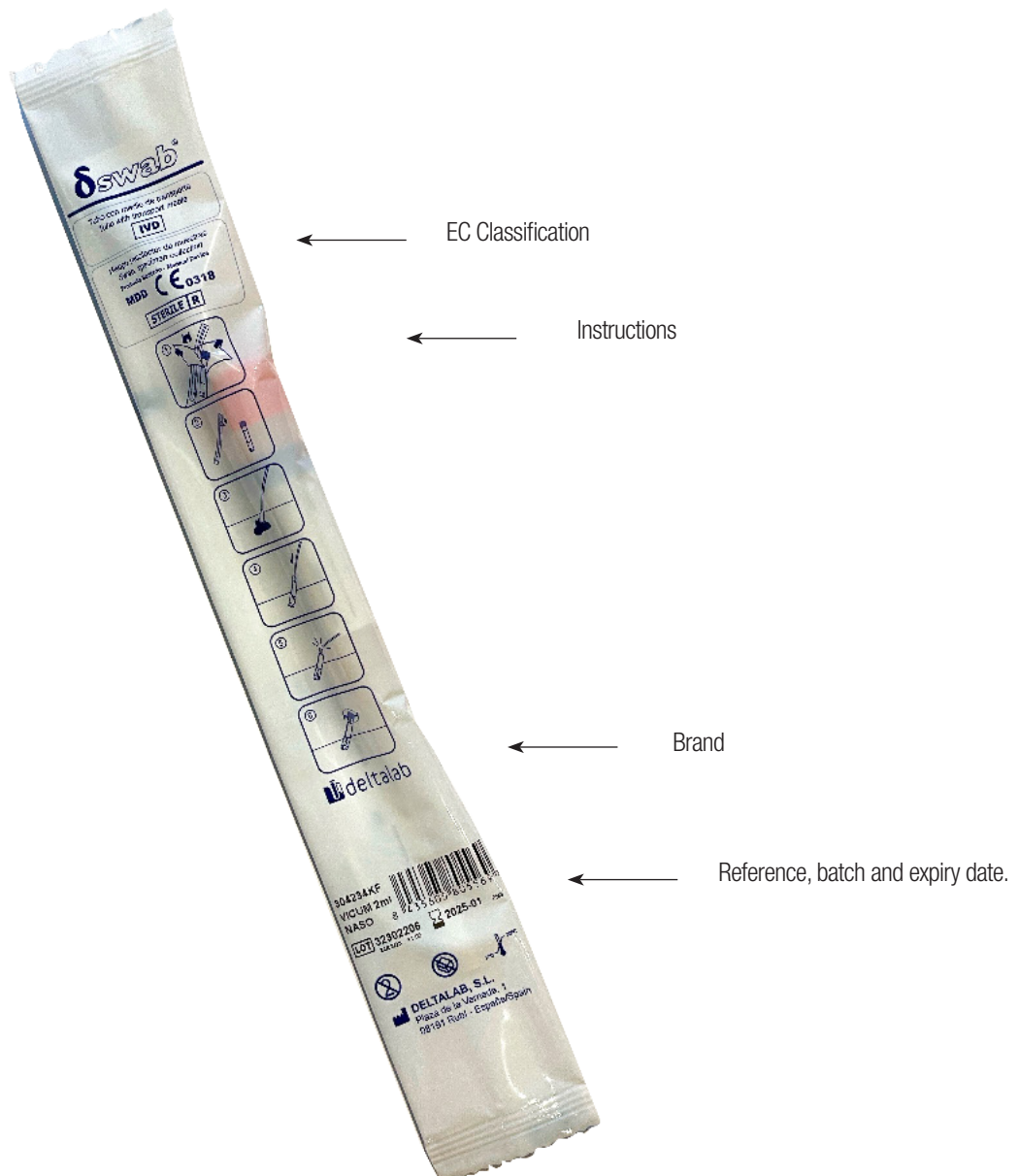
TECHNICAL DATA SHEET

Deltaswab tube with ViCUM[®] media and flocked swab

code 304238KF

FLOW-PACK DESIGN

Plastic flow-pack containing the tube with ViCUM[®] medium and the flocked swab in a flow-pack.



WRITTEN	VERIFIED	AUTHORISED
Pascal Montoya Marketing Department	Anna Mir Technical, RA, Quality & Environment Director	Mònica Torras Sales & Marketing Director