

# TECHNICAL DATA SHEET

## Tubes Deltaswab range with Amies media and flocked swabs

codes 304221KF\*, 304222KF\*, 304225F\* and 304226F\*

code	ml	description	breakpoint mm	case quantity	case weight	case volume
304221KF*	1	Amies with standard flocked swab	80	6 x 100	5.7	0.056
304222KF*	1	Amies with urethral flocked swab	80	6 x 100	5.6	0.056
304225F*	1	Amies with nasopharyngeal flocked swab	100	6 x 100	5.6	0.056
304226F*	1	Amies with minitip flocked swab	100	6 x 100	5.5	0.056

Tubo with media: Directive 98/79/CE. "In vitro" diagnostic medical devices.

Swab: Directive 93/42/CEE. Medical Devices.



### INTENDED USE - DESCRIPTION

The transport system is composed of:

- A tube with 1 ml Amies transport media
- Flocked swabs
- Presentation in flow-pack

Swab: sterile by radiation (R)

Particularly suited for the collection and transport of microbiological specimens.

It maintains the viability of Aerobes, Facultative Anaerobes and Anaerobes Bacteria for a minimum of 48 hours both at room temperature (20-25°C) and at refrigeration temperature (2-8°C) and 24 hours with Fastidious Bacteria.

Designed both for traditional and automated sample streaking.

Compatible with the molecular diagnostic techniques and for direct extension on glass slides.

Shelf life: 30 months

\* Code not available for sale in Italy

#### Tube dimensions

tube length	tube diameter	cap diameter
82.6 mm	13 mm	16.6 mm

#### Swab dimensions

Length: 152 mm

WRITTEN	VERIFIED	AUTHORISED
Soti Khiev Marketing Department	Anna Mir Technical, Development, Quality and Environment Director	Mónica Torras Sales and Marketing Director

## TECHNICAL DATA SHEET

### Tubes Deltaswab range with Amies media and flocked swabs

codes 304221KF\*, 304222KF\*, 304225F\* and 304226F\*

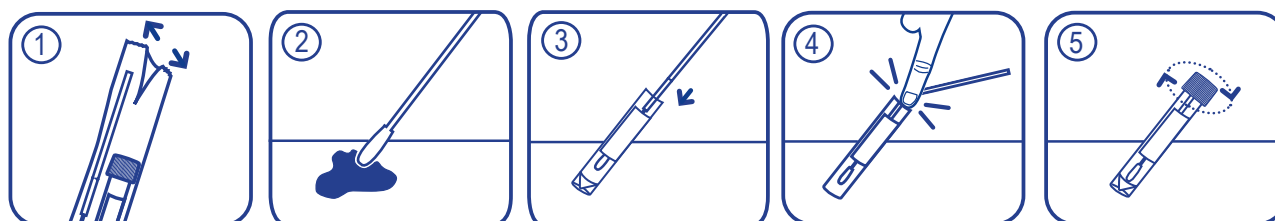
#### FEATURES AND ADVANTAGES OF DELTASWAB SYSTEM

- Compatible with the new inoculation automation and sample streaking equipment.
- Compatible with molecular diagnostic techniques.
- Facilitates the collection, transport and subsequent treatment of microbiological samples.
- Greater reliability for sample recovery: high capacity for the absorption and elution of the sample from the Deltaswab flocked swab.
- Greater feasibility of the sample as it is totally suspended in the medium.
- Allows different homogeneous inocula to be obtained from the same sample.
- It adapts to any working protocol.
- Minimises any possible cross-contamination: less handling and maximum water tightness.
- More comfort for the user: conical base which facilitates stirring and greater stability of the tube with skirt base.
- More comfort for the patient, due to the softer swab covering.
- Standardises the receipt of samples at the microbiology labs.
- Facilitates manual streaking.
- Allows direct extension on the glass slide as the medium does not contain agar.
- Ensures proper sample transport and storage both at room temperatures (20 °C – 25 °C) and at refrigeration temperatures (4 °C – 8 °C)
- Maximum reliability and convenience of the breakpoint.

#### FEATURES AND ADVANTAGES OF FLOCKED SWABS

- Support made of polystyrene --> Optimum safety.
- Head swab made of flocked fibers--> increased absorption and elution of the sample on the media.
- Maximum adaptability --> wide range
- Maximum comfort --> anatomical and ergonomic design.

#### INSTRUCTIONS FOR USE



1. Open the kit flow-pack with both hands by pulling opposite sides.
2. Take the swab and collect the sample.
3. Open the tube with the other hand and introduce the swab until reaching the bottom of the tube so that it is covered with the medium.
4. Break the swab holding it by the top part and rotating it to both sides until it breaks.
5. Discard the top part of the stick, screw the cap and agitate so that the sample elutes into the medium.

Send the tube with the sample to the laboratory for analysis.

WRITTEN	VERIFIED	AUTHORISED
Soti Khiev Marketing Department	Anna Mir Technical, Development, Quality and Environment Director	Mónica Torras Sales and Marketing Director

# TECHNICAL DATA SHEET

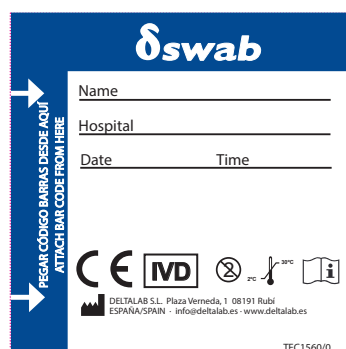
## Tubes Deltaswab range with Amies media and flocked swabs

codes 304221KF\*, 304222KF\*, 304225F\* and 304226F\*

### TUBE AND SWAB KIT

code	description
304221KF*	Amies 1 ml with standard flocked swab
304222KF*	Amies 1 ml with urethral flocked swab
304225F*	Amies 1 ml with nasopharyngeal flocked swab
304226F*	Amies 1 ml with minitip flocked swab

### LABEL DESIGN



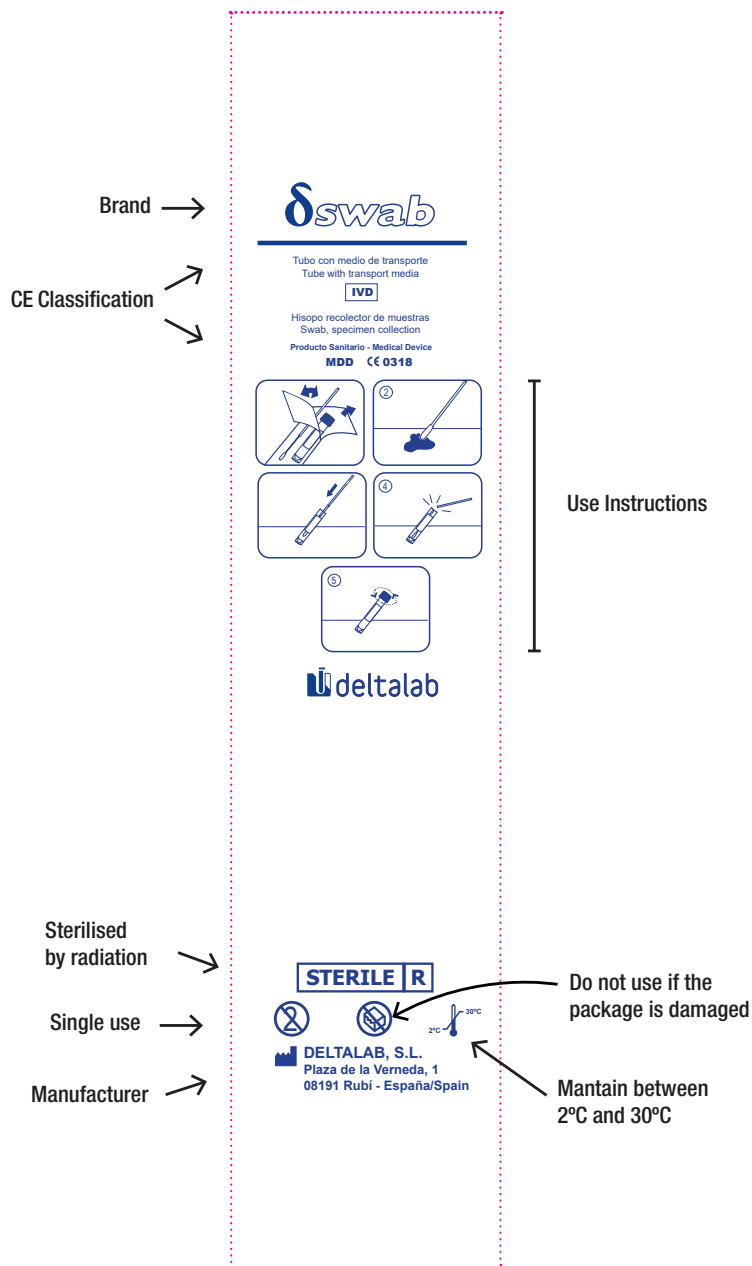
WRITTEN	VERIFIED	AUTHORISED
Soti Khiev Marketing Department	Anna Mir Technical, Development, Quality and Environment Director	Mónica Torras Sales and Marketing Director

# TECHNICAL DATA SHEET

## Tubes Deltaswab range with Amies media and flocked swabs

codes 304221KF\*, 304222KF\*, 304225F\* and 304226F\*

### FLOW-PACK



WRITTEN	VERIFIED	AUTHORISED
Soti Khiev Marketing Department	Anna Mir Technical, Development, Quality and Environment Director	Mónica Torras Sales and Marketing Director