



## LABORTOPS

valid until 31.03.2024

### Digital dry bath LLG-uniBLOCKTHERM

- New block with thermal beads
- Large blocks selection
- Timed and continuous operation



**NEW**

Page 3

Laboratory Bottles	2	Filtration	20
Heating	3	Personal Protection	21 - 22
Volumetry	4	Laboratory Furniture	23
Glassware	5 - 6	Cleanroom	24
Liquid Handling	7 - 8	Sample Preparation / Sampling	25 - 26
Cell Culture	9 - 10	pH Measurement	27
Genomics	11 - 12	Temperature Measurement	28
Microbiology	13 - 14	Timer	29
Optics	15 - 16	Weighing	30
Chromatography	17 - 18	Shaking and Mixing	31
General Laboratory Supply	19	Magnetic Stirrer	32

## Laboratory Bottle system DURAN® YOUTILITY



- Specially shaped gripping zones on both sides of the bottle for easier and safer handling
- With the new YOUTILITY bottle thread opening or closing the bottle is significantly faster. The thread is fully compatible with DIN GL 45 closures and other accessories
- Nominal volume is shown at the top of the easy-to-read graduation scale for fast determination of the volumes
- Glass bottle body is moulded from the tried and tested DURAN® borosilicate 3.3 Type 1 neutral glass. DURAN® glass offers very good chemical resistance and high-temperature resistance
- The YOUTILITY bottle has an integrated Retrace Code to allow full product traceability. The lot-specific certificate of conformance is available at: [www.duran-group.com](http://www.duran-group.com)
- Each DURAN® YOUTILITY bottle is supplied as a complete system, with a pouring ring (cyan polypropylene) and a GL 45 cap (cyan polypropylene)

**-27%**

Capacity	Ext. diam.	Height	PK	Cat. No.	Price	Now
ml	mm	mm			GBP	GBP
125	55	124	4	9.071 679	<del>32.24</del>	<b>23.54</b>
250	66	158	4	9.071 678	<del>36.00</del>	<b>26.28</b>
500	78	193	4	9.071 677	<del>44.76</del>	<b>32.67</b>
1000	93	253	4	9.071 676	<del>63.23</del>	<b>46.16</b>

## Baffled Wide-mouth bottles, GLS 80®, DURAN®, with screw cap



The wide-neck chicane bottle has three vertical chicanes on the inner walls that interrupt radial vortex movement.

- Compatible with DURAN® GLS 80® stirred reactors as well as other magnetic stirrers.
- Made of DURAN® borosilicate glass 3.3
- The generous inner diameter of the GLS 80® wide neck of 65 mm allows easy access to the bottle contents
- The baffles are recessed into the side walls of the glass and can be easily cleaned due to their continuous, smooth surface
- With pouring ring

**-27%**

Capacity	Diam.	Height	PK	Cat. No.	Price	Now
ml	mm	mm			GBP	GBP
250	95	105	1	6.270 534	<del>25.51</del>	<b>18.62</b>
500	101	152	1	6.270 535	<del>33.98</del>	<b>24.81</b>
1000	101	222	1	6.270 536	<del>44.51</del>	<b>32.49</b>

## Laboratory bottle, DURAN® amber glass, with screw cap and pouring ring made of PP



For the storage and transport of photosensitive substances. With easy-to-read graduation and large labelling field for easy identification. UV protection up to approx. 500 nm wavelength.

- ISO 4796-1
- USP standard
- Retrace code
- Autoclavable

**-27%**

Capacity	Diam.	Height	Neck thread	PK	Cat. No.	Price	Now
ml	mm	mm	GL			GBP	GBP
50	46	91	32	1	7.671 498	<del>21.04</del>	<b>16.02</b>
100	56	105	45	1	6.262 932	<del>24.28</del>	<b>17.72</b>
250	70	143	45	1	9.071 961	<del>34.55</del>	<b>25.22</b>
500	86	181	45	1	6.259 101	<del>44.51</del>	<b>32.49</b>
1000	101	230	45	1	6.259 102	<del>54.47</del>	<b>39.76</b>
2000	136	265	45	1	6.259 797	<del>84.34</del>	<b>61.57</b>

## Laboratory bottles, DURAN®, with retrace code, with screw cap



With blue PP screw cap and pouring ring.

**-27%**

Capacity	Diam.	Height with cap	Neck thread	PK	Cat. No.	Price	Now
ml	mm	mm	GL			GBP	GBP
50	46	91	32	1	9.072 000	<del>8.69</del>	<b>6.34</b>
100	56	105	45	1	9.072 001	<del>7.44</del>	<b>5.43</b>
250	70	143	45	1	9.072 002	<del>8.33</del>	<b>6.08</b>
500	86	181	45	1	9.072 005	<del>10.37</del>	<b>7.57</b>
1000	101	230	45	1	9.072 010	<del>14.45</del>	<b>10.55</b>
2000	136	265	45	1	9.072 007	<del>33.98</del>	<b>24.81</b>

## Drying and heating cabinets with natural convection



For drying and heating in research and quality control. With ramp function, optical temperature alert and delayed power-off.

- APT.line™ preheating chamber technology
- Natural convection with homogenous temperature distribution
- Adjustable exhaust air flap
- Digital controller with timer
- Easy and ergonomical door opening
- Class 2 integrated independent adjustable temperature safety device (DIN 12880) with visual alarm

**Scope of delivery:** Heating oven, 1 chrome plated rack incl. shelf supports

### ED-S 56 Solid.Line

#### Specifications

Temperature range:	RT + 10 °C ... 250 °C
Temperature variation at 150 °C:	±2.8 °C
Heating-up time to 150 °C:	60 min
Permitted load:	30 kg
Weight:	38 kg
Power supply:	230 V, 50/60 Hz

**-14%**

Type	PK	Cat. No.	Price	Now
			GBP	GBP
ED-S 56	1	4.665 042	<del>1,107.90</del>	<b>952.79</b>

### ED-S 115 Solid.Line

#### Specifications

Temperature range:	RT + 7 °C ... 250 °C
Temperature variation at 150 °C:	±2.8 °C
Heating-up time to 150 °C:	55 min
Interior volume:	118 l
Internal dimensions:	550 x 390 x 550 mm
External dimensions:	745 x 565 x 735 mm
Permitted load:	75 kg
Max. shelves:	5
Weight:	54 kg
Power supply:	230 V, 50/60 Hz

**-14%**

Type	PK	Cat. No.	Price	Now
			GBP	GBP
ED-S 115	1	4.667 816	<del>1,382.40</del>	<b>1,188.86</b>

## Digital dry bath LLG-uniBLOCKTHERM



- Up to 120 °C
- Alternative for water baths
- zero contamination



Suitable for use in microbiological, histological, clinical, industrial and environmental laboratories. Various types of optional heating blocks are available as accessories for the LLG-uniBLOCKTHERM.

- Digital control with LED display
- Can be used up to 120 °C
- For timer and continuous operation
- Can be used with different heating blocks
- 1 x block unit
- With overheating protection



#### Scope of supply:

LLG-uniBLOCKTHERM, removal tool, lid

**Please order heating blocks separately.**

#### Specifications

Temperature range:	RT ... 120 °C
Temperature uniformity:	±0.5 °C
Temperature accuracy:	±0.5 °C
Timer:	0 ... 99:59:00 min
Block material:	Aluminium
Dimensions (W x D x H):	175 x 290 x 85 mm
Weight:	3 kg
Power supply:	220 ... 240 V, 50/60 Hz

**-16%**

Type	Plug type	PK	Cat. No.	Price	Now
				GBP	GBP
LLG-uniBLOCKTHERM	EU	1	6.263 460	<del>287.40</del>	<b>241.42</b>
LLG-uniBLOCKTHERM	UK	1	6.263 461	<del>302.21</del>	<b>253.86</b>

## Accessories for LLG-uniBLOCKTHERM



6.263 464

6.263 557

6.263 559

**-20%**

Dimensions Heating blocks (W x D x H): 95 x 150 x 50 mm

Description	PK	Cat. No.	Price	Now
			GBP	GBP
Heating block 40 x 1.5 ml	1	6.263 464	<del>92.06</del>	<b>73.65</b>
Heating block 40 x 2.0 ml	1	6.263 465	<del>101.22</del>	<b>81.02</b>
Heating block with aluminium beads	1	6.263 557	<del>103.37</del>	<b>82.70</b>
Aluminium beads	1	6.263 558	<del>51.60</del>	<b>41.35</b>
Heating block for aluminium beads	1	6.263 559	<del>51.60</del>	<b>41.35</b>

## LLG-Heat/Cold hand protector "TempHand", silicone rubber



Gripper made of red silicone rubber to protect hands when handling hot or cold vessels. Suitable for temperatures from -50 °C up to 250 °C. Two grip openings for quick and easy use. One size fits all, can be used on both sides. With non-slip grip surface.

**-20%**

Description	PK	Cat. No.	Price	Now
			GBP	GBP
LLG-Heat/Cold hand protector "TempHand"	1	6.322 889	<del>12.13</del>	<b>9.70</b>



## Measuring cylinders, borosilicate glass 3.3, low form, class B, amber graduations



- SILBERBRAND Eterna
- DIN EN ISO 4788
- With spout and hexagonal foot
- Calibrated to contain IN

**-28%**

Capacity	Grad.	Tolerance	Height	PK	Cat. No.	Price	Now
ml	ml	± ml	mm			GBP	GBP
10	1	0.3	90	1	9.274 608	<del>7.50</del>	<b>5.40</b>
25	1	0.5	115	1	9.274 620	<del>7.50</del>	<b>5.40</b>
50	2	1	145	1	9.274 628	<del>7.71</del>	<b>5.55</b>
100	2	1	165	1	9.274 638	<del>9.19</del>	<b>6.62</b>
250	5	2	195	1	9.274 648	<del>16.06</del>	<b>11.56</b>
500	10	5	250	1	9.274 654	<del>24.96</del>	<b>17.97</b>
1000	20	10	285	1	9.274 662	<del>38.30</del>	<b>27.58</b>
2000	50	20	340	1	9.274 664	<del>66.65</del>	<b>47.99</b>

## Measuring cylinders, borosilicate glass 3.3, tall form, class A, blue graduated



With spout, tall form. BLAUBRAND®. To DIN EN ISO 4788. DE-M marking with works certified batch number. Calibrated to contain (IN). All BLAUBRAND® cylinders are delivered with batch number and batch certificate.

**-32%**

Capacity	Grad.	Tolerance	Height	PK	Cat. No.	Price	Now
ml	ml	± ml	mm			GBP	GBP
10	0.2	0.10	140	1	9.274 108	<del>9.04</del>	<b>6.15</b>
25	0.5	0.25	170	1	9.274 120	<del>9.50</del>	<b>6.46</b>
50	1	0.5	200	1	9.274 128	<del>10.46</del>	<b>7.11</b>
100	1	0.5	260	1	9.274 138	<del>11.11</del>	<b>7.55</b>
250	2	1.0	335	1	9.274 148	<del>19.96</del>	<b>13.57</b>
500	5	2.5	365	1	9.274 154	<del>33.93</del>	<b>23.07</b>
1000	10	5.0	465	1	9.274 162	<del>52.88</del>	<b>35.96</b>
2000	20	10	505	1	9.274 164	<del>89.61</del>	<b>60.93</b>

## Measuring cylinders, borosilicate glass 3.3, tall form, class B, amber graduation



High form. SILVER BRANDY ETERNA. DIN EN ISO 4788. With spout and hexagonal base in glass. Adjusted to IN.

**-28%**

Capacity	Grad.	Tolerance	Height	PK	Cat. No.	Price	Now
ml	ml	± ml	mm			GBP	GBP
10	0.2	0.15	140	1	9.274 008	<del>7.66</del>	<b>5.52</b>
25	0.5	0.4	170	1	9.274 020	<del>8.03</del>	<b>5.78</b>
50	1	0.8	200	1	9.274 028	<del>8.26</del>	<b>5.95</b>
100	1	0.8	260	1	9.274 038	<del>9.04</del>	<b>6.51</b>
250	2	1.5	335	1	9.274 048	<del>15.88</del>	<b>11.43</b>
500	5	4	365	1	9.274 054	<del>26.04</del>	<b>18.75</b>
1000	10	8	465	1	9.274 062	<del>43.43</del>	<b>31.27</b>
2000	20	15	505	1	9.274 064	<del>72.35</del>	<b>52.09</b>

## Measuring cylinders, PMP, tall form, class A, blue graduations



Clear. Exposure to temperatures up to 121 °C (autoclaving) will not cause permanently exceeded error limits. Supplied with batch number and one batch certificate per packing unit.

- DIN 12681 and ISO 6706
- DE-M marking

**-32%**

Capacity	Grad.	Tolerance	Height	PK	Cat. No.	Price	Now
ml	ml	± ml	mm			GBP	GBP
10	0.2	0.10	145	1	9.274 790	<del>7.97</del>	<b>5.42</b>
25	0.5	0.25	170	1	9.274 791	<del>8.51</del>	<b>5.79</b>
50	1	0.5	200	1	9.274 792	<del>8.91</del>	<b>6.06</b>
100	1	0.5	250	1	9.274 793	<del>12.20</del>	<b>8.30</b>
250	2	1.0	315	1	9.274 794	<del>18.49</del>	<b>12.57</b>
500	5	2.5	360	1	9.274 795	<del>28.03</del>	<b>19.06</b>
1000	10	5	440	1	9.274 796	<del>39.95</del>	<b>27.17</b>
2000	20	10	535	1	9.274 797	<del>65.86</del>	<b>44.78</b>

## Sealing films, BRAND Seal-R-film™



The sealing film can be stretched to three times its original length. Lot identification of each roll.

**-21%**

Width	Length	Thickness	Temp. range	PK	Cat. No.	Price	Now
mm	m	mm	°C			GBP	GBP
50	75	0,14 ± 0,02	-20 ... 46	1	9.170 022	<del>27.49</del>	<b>21.72</b>
100	38	0,14 ± 0,02	-20 ... 46	1	9.170 021	<del>26.04</del>	<b>20.57</b>
100	75	0,14 ± 0,02	-20 ... 46	1	9.170 023	<del>53.51</del>	<b>42.27</b>
500	15	0,14 ± 0,02	-20 ... 46	1	9.170 024	<del>66.54</del>	<b>52.57</b>



**New: extended LLG glassware range**

**LLG-Three-neck round bottom flasks with standard ground joint, borosilicate glass 3.3, parallel side necks**



Side necks are parallel to the centre neck. With white inscription. Acc. to DIN 12392, \*DIN 12392.

**-20%**

Nominal capacity ml	Height mm	Centre neck NS	Lateral neck	PK	Cat. No.	Price GBP	Now GBP
250*	140	29/32	NS14/23	1	4.686 166	<del>16.55</del>	<b>13.24</b>
250	140	29/32	NS29/32	1	4.686 169	<del>20.29</del>	<b>16.23</b>
500*	163	29/32	NS14/23	1	4.686 167	<del>18.55</del>	<b>14.84</b>
500	163	29/32	NS29/32	1	4.686 170	<del>21.04</del>	<b>17.55</b>
1000*	200	29/32	NS14/23	1	4.686 168	<del>29.38</del>	<b>23.50</b>
1000	200	29/32	NS29/32	1	4.686 171	<del>31.42</del>	<b>25.14</b>
2000	240	29/32	NS29/32	1	4.686 172	<del>55.29</del>	<b>44.23</b>

**LLG-Separating funnel, conical, borosilicate glass 3.3**



Separating funnel with PTFE stopcock.

- DIN ISO 4800
- With standard ground joint and stopper

**-20%**

Nominal capacity ml	Bore mm	Ground size NS	PK	Cat. No.	Price GBP	Now GBP
50	2.5	19/26	1	4.686 257	<del>21.62</del>	<b>17.30</b>
100	2.5	19/26	1	4.686 258	<del>21.84</del>	<b>17.47</b>
250	4.0	29/32	1	4.686 259	<del>25.39</del>	<b>20.31</b>
500	4.0	29/32	1	4.686 260	<del>27.02</del>	<b>21.62</b>
1000	6.0	29/32	1	4.686 261	<del>38.54</del>	<b>30.83</b>
2000	6.0	29/32	1	4.686 262	<del>57.87</del>	<b>46.30</b>

**Pear shape flasks with standard ground joint, borosilicate glass 3.3**



With standard ground joint and white inscription.

**-27%**

Nominal capacity ml	Dimensions (dia. x H) mm	Ground size NS	PK	Cat. No.	Price GBP	Now GBP
10	31 x 75	14/23	1	4.686 145	<del>3.80</del>	<b>2.77</b>
25	42 x 90	14/23	1	4.686 146	<del>4.54</del>	<b>3.31</b>
50	51 x 100	14/23	1	4.686 147	<del>5.62</del>	<b>4.10</b>
50	51 x 100	29/32	1	4.686 150	<del>6.58</del>	<b>4.80</b>
100	64 x 130	14/23	1	4.686 148	<del>6.52</del>	<b>4.76</b>
100	64 x 130	29/32	1	4.686 151	<del>8.42</del>	<b>6.15</b>
250	85 x 150	14/23	1	4.686 149	<del>8.54</del>	<b>6.23</b>

**LLG-Standing flasks with standard ground joint, borosilicate glass 3.3**



With flat bottom and standard ground joint. White graduation and inscription. Acc. to DIN EN ISO 4797.

**-20%**

Nominal capacity ml	Dimensions (dia. x H) mm	Ground size NS	PK	Cat. No.	Price GBP	Now GBP
50	51 x 85	29/32	2	4.686 119	<del>7.92</del>	<b>6.34</b>
100	64 x 103	14/23	2	4.686 120	<del>9.51</del>	<b>7.61</b>
100	64 x 103	29/32	2	4.686 121	<del>9.51</del>	<b>7.61</b>
250	85 x 130	29/32	2	4.686 122	<del>10.95</del>	<b>8.76</b>
500	105 x 160	29/32	2	4.686 123	<del>14.71</del>	<b>11.77</b>
1000	131 x 187	29/32	1	4.686 124	<del>19.73</del>	<b>15.78</b>
2000	166 x 230	29/32	1	4.686 125	<del>28.06</del>	<b>22.45</b>



**New: extended LLG glassware range**



## LLG-Filter flasks with nozzle, borosilicate glass 3.3



Filter flask with side-arm made of glass. With heavy wall for vacuum applications.

- Erlenmeyer shape
- White graduation and inscription

**-20%**

Nominal capacity ml	PK	Cat. No.	Price GBP	Now GBP
100	1	4.686 173	<del>7.11</del>	<b>5.69</b>
250	1	4.686 174	<del>9.57</del>	<b>7.66</b>
500	1	4.686 175	<del>12.72</del>	<b>10.18</b>
1000	1	4.686 176	<del>21.44</del>	<b>17.15</b>
2000	1	4.686 177	<del>35.47</del>	<b>28.38</b>

## LLG-Condenser acc. to Liebig, borosilicate glass 3.3



For condensing vapours. Water connection with glass olives or PP olives. With standard ground cone and socket. Acc. to DIN 12576.

**-20%**

Description	Effective length mm	Cone NS	Socket NS	PK	Cat. No.	Price GBP	Now GBP
PP olive	250	29/32	29/32	1	4.686 186	<del>16.73</del>	<b>13.38</b>
PP olive	400	29/32	29/32	1	4.686 187	<del>18.92</del>	<b>15.14</b>
Glass olive	250	29/32	29/32	1	4.686 188	<del>16.73</del>	<b>13.38</b>
Glass olive	400	29/32	29/32	1	4.686 189	<del>18.92</del>	<b>15.14</b>

## LLG-Powder funnel with NS cone, borosilicate glass 3.3



Powder funnel made of borosilicate glass 3.3 with NS cone

**-20%**

Funnel diam. mm	Ground size NS	PK	Cat. No.	Price GBP	Now GBP
60	14/23	2	4.686 180	<del>9.36</del>	<b>7.49</b>
80	19/26	2	4.686 181	<del>12.38</del>	<b>9.90</b>
100	24/29	2	4.686 182	<del>14.19</del>	<b>11.35</b>
120	29/32	2	4.686 183	<del>21.15</del>	<b>16.92</b>

## LLG-Condenser acc. to Allihn, borosilicate glass 3.3



For condensing vapours. Water connection with glass olives or PP olives. With standard ground cone and socket. Acc. to DIN 12576.

**-20%**

Description	Effective length mm	Cone NS	Socket NS	PK	Cat. No.	Price GBP	Now GBP
Glass olive	250	29/32	29/32	1	4.686 194	<del>19.62</del>	<b>15.70</b>
Glass olive	400	29/32	29/32	1	4.686 195	<del>25.36</del>	<b>20.29</b>
PP olive	250	29/32	29/32	1	4.686 196	<del>22.29</del>	<b>17.83</b>
PP olive	400	29/32	29/32	1	4.686 197	<del>31.81</del>	<b>25.45</b>

## Multichannel microlitre pipettes Acura® manual 855, variable



- Ergonomic design
- 360° turnable
- 3 years guarantee



- 8- and 12-channel models up to 350 µl
- Precision digital display visible at all times
- Adjustable tip ejector fitting most tips
- Integrated user calibration system
- Autoclavable at 121 °C/250 °F

**-22%**

Channels	Capacity	Increments	Tip	PK	Cat. No.	Price	Now
	µl	µl	µl			GBP	GBP
8	0,5 - 10	0,01	10	1	9.411.630	<del>625.32</del>	<b>487.75</b>
8	2 - 20	0,01	20	1	6.323.679	<del>625.32</del>	<b>487.75</b>
8	5 - 50	0,1	200	1	9.411.631	<del>585.99</del>	<b>457.07</b>
8	10 - 100	0,1	200	1	6.286.775	<del>585.99</del>	<b>457.07</b>
8	20 - 200	0,2	200	1	9.411.632	<del>585.99</del>	<b>457.07</b>
8	40 - 350	0,4	350	1	9.411.633	<del>585.99</del>	<b>457.07</b>
12	0,5 - 10	0,01	10	1	9.411.634	<del>720.99</del>	<b>562.30</b>
12	5 - 50	0,1	200	1	9.411.635	<del>672.66</del>	<b>524.67</b>
12	20 - 200	0,2	200	1	9.411.636	<del>672.66</del>	<b>524.67</b>
12	40 - 350	0,4	350	1	9.411.637	<del>672.66</del>	<b>524.67</b>

## LLG-Pasteur Pipettes, PE



**-20%**

Manufactured from transparent PE.  
Sterile or non-sterile. Graduated.

Type	Capacity	Length	PK	Cat. No.	Price	Now
	ml	mm			GBP	GBP
non-sterile	1	150	500	4.672.670	<del>9.48</del>	<b>7.58</b>
non-sterile	3	150	500	4.672.671	<del>9.48</del>	<b>7.58</b>
sterile, single wrapped	1	150	1000	9.401.085	<del>72.64</del>	<b>58.11</b>
sterile, single wrapped	3	150	1000	9.401.084	<del>72.64</del>	<b>58.11</b>

## LLG single channel microliter pipettes, variable



**Topseller**



Each pipette is individually tested and calibrated twice.  
Certificate enclosed.

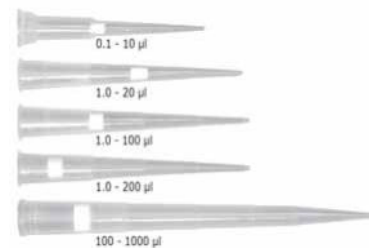
- Available with fixed or variable volume setting
- Easy maintenance and calibration
- Colour coding of the individual volumes

**-20%**

Capacity	Increments	Colour code	PK	Cat. No.	Price	Now
µl	µl				GBP	GBP
0.1 - 2.5	0.05	grey	1	9.280.000	<del>51.26</del>	<b>41.01</b>
0.5 - 10	0.1	grey	1	9.280.001	<del>51.26</del>	<b>41.01</b>
2 - 20	0.5	grey	1	9.280.002	<del>51.26</del>	<b>41.01</b>
10 - 100	1.0	yellow	1	9.280.003	<del>51.26</del>	<b>41.01</b>
20 - 200	1.0	yellow	1	9.280.004	<del>51.26</del>	<b>41.01</b>
100 - 1000	5.0	blue	1	9.280.005	<del>51.26</del>	<b>41.01</b>
500 - 5000	50.0	purple	1	9.280.006	<del>51.26</del>	<b>41.01</b>
1000 - 10000*	100.0	turquoise	1	9.280.007	<del>51.26</del>	<b>41.01</b>

\* 10000µl pipette does not have a tip ejector

## LLG-Filter tips 2.0 Low Retention, PP



The new generation of LLG Labware filter tips with low liquid retention.  
You can find the appropriate compatibility list on [www.llg-labware.com](http://www.llg-labware.com) in the Downloads section.

- Improved optical clarity and pipette fit
- Colored coded rack inserts for easy identification
- Graduated
- Sterile
- DNase and RNase free

**-20%**

Capacity	Package contents	PK	Cat. No.	Price	Now
µl				GBP	GBP
0.1 ... 10	10 x 96	960	4.668.784	<del>54.42</del>	<b>43.58</b>
0.1... 10*	10 x 96	960	4.668.785	<del>54.42</del>	<b>43.58</b>
1 ... 20	10 x 96	960	4.668.786	<del>54.42</del>	<b>43.58</b>
1 ... 100	10 x 96	960	4.668.787	<del>54.42</del>	<b>43.58</b>
1 ... 200	10 x 96	960	4.668.788	<del>54.42</del>	<b>43.58</b>
100 ... 1000	8 x 96	768	4.668.789	<del>52.46</del>	<b>41.97</b>

\* Tip XL

## Peristaltic pump LLG-uniPERISTALTICPUMP 1



- Compact peristaltic pump
- Interchangeable pump heads



Ideal for continuous dosing applications. Space-saving, robust and with a wide range of easily exchangeable pump heads.

- Stable flow rates
- **Compact design**
- Reversible working direction
- Pump heads easily exchangeable
- Various pump heads with different hose diameters available as accessory
- Low power consumption
- Corrosion-resistant ABS housing
- OLED display for indication of speed and working direction

**Scope of supply:** Pump, pump head, PharMed® hose connectors 3 mm ID, 5 mm AD

### Specifications

Speed range:	0.1 ... 150 rpm
Speed accuracy:	±0.1 rpm
Flow rate range:	0.004 ... 63.69 ml/min
Weight:	0.8 kg
Dimensions (W x D x H):	180 x 115 x 125 mm
IP code:	IP 31
Working temperature range:	0 ... 40 °C
Max. humidity:	80 %
Power rating:	10 W
Power supply:	100 ... 240 V, 50/60 Hz

**-16%**

Type	Plug type	PK	Cat. No.	Price	Now
				GBP	GBP
LLG-uniPERISTALTICPUMP 1	EU	1	6.263 540	<del>271.69</del>	<b>228.22</b>
LLG-uniPERISTALTICPUMP 1	UK	1	6.263 541	<del>271.69</del>	<b>228.22</b>

## Accessories for LLG-uniPERISTALTICPUMP 1/3

**-20%**

Description	PK	Cat. No.	Price	Now
			GBP	GBP
Pumphead with PharMed® tubing ID 1 mm*	1	6.263 542	<del>34.71</del>	<b>27.77</b>
Pumphead with PharMed® tubing ID 2 mm*	1	6.263 543	<del>34.71</del>	<b>27.77</b>
Pumphead with PharMed® tubing ID 3 mm*	1	6.263 544	<del>34.71</del>	<b>27.77</b>
PharMed® tubing (ID: 3.1mm, OD: 6.3mm) with connector and Tube Clip**	1	6.263 552	<del>9.09</del>	<b>7.27</b>
PharMed® tubing (ID: 4.8 mm, OD: 8 mm) with connector and Tube Clip**	1	6.263 553	<del>12.54</del>	<b>10.03</b>
PharMed® tubing (ID: 6.4 mm, OD: 9.6 mm) with connector and Tube Clip**	1	6.263 554	<del>12.54</del>	<b>10.03</b>

ID = Inner diameter || OD = Outer diameter

\*LLG-uniPERISTALTICPUMP 1 || \*\*LLG-uniPERISTALTICPUMP 3

## Peristaltic pump LLG-uniPERISTALTICPUMP 3



- High volumetric efficiency



Ideal for continuous dosing applications. Space-saving, robust and with stable flow rate.

- **High pumping capacity of 398 ml/min**
- Reversible working direction
- Hose connectors easily exchangeable
- Low power consumption
- Corrosion-resistant ABS housing
- OLED display for indication of speed and working direction

**Scope of supply:** Pump, pump head, PharMed® hose connectors 6.4 mm ID, 9.6 mm AD

### Specifications

Speed range:	0.1 ... 150 rpm
Speed accuracy:	±0.1 rpm
Flow rate range:	0.08 ... 398 ml/min
Weight:	0.8 kg
Dimensions (W x D x H):	190 x 128 x 135 mm
IP code:	IP 31
Working temperature range:	0 ... 40 °C
Max. humidity:	80 %
Power rating:	20 W
Power supply:	100 ... 240 V, 50/60 Hz

**-16%**

Type	Plug type	PK	Cat. No.	Price	Now
				GBP	GBP
LLG-uniPERISTALTICPUMP 3	EU	1	6.263 550	<del>339.08</del>	<b>284.83</b>
LLG-uniPERISTALTICPUMP 3	UK	1	6.263 551	<del>339.08</del>	<b>284.83</b>

## Drum pump Pump-it®

For rapid and clean emptying from cans, drums and small barrels up to 60 L.



- Precise dosing, without dripping
- Pump connection suitable for 64 mm dia. (BSI) container threads
- stepless length adjustment of immersion tube
- Threaded adapters for most commercially-sold containers available
- Not suitable for HCl



**-25%**

Immersion depth	Flow rate	Material	PK	Cat. No.	Price	Now
mm	L / min.				GBP	GBP
1000	8	PP/FKM	1	9.001 110	<del>118.85</del>	<b>89.14</b>



## 96-well plate Nunc™ Edge 2.0, with flat bottom, clear, PS



thermo scientific

- Reduced Edge Effect virtually eliminates evaporation in lengthy incubations
- Overall plate evaporation rate reduced to <2 % after seven days of incubation
- Large evaporative buffer zones eliminate well-to-well variability
- Perimeter moat can be filled with 1.7 mL sterile H<sub>2</sub>O or media
- Low background fluorescence, ideal for optical instruments
- Ideal for image-based high content applications like measuring primary neuron cultures
- Untreated or cell culture treated hydrophilic surface (Nunclon™ Δ)
- Total well volume: 400 µL

**-33%**

Description	Surface	Sterile	PK	Cat. No.	Price	Now
					GBP	GBP
with lid	Nunclon™ Δ	+	50	6.283 122	<del>109.29</del>	<b>73.22</b>
with lid	Non-treated	+	50	6.283 126	<del>86.79</del>	<b>58.15</b>
with lid	Nunclon™ Δ	+	160	6.283 123	<del>298.46</del>	<b>199.97</b>
without lid	Nunclon™ Δ	+	50	6.283 125	<del>94.01</del>	<b>62.99</b>
without lid	Nunclon™ Δ	+	160	6.283 124	<del>279.23</del>	<b>187.08</b>
with lid	Non-treated	+	160	6.283 127	<del>247.60</del>	<b>165.95</b>
without lid	Non-treated	+	50	6.283 130	<del>74.74</del>	<b>50.08</b>
without lid	Non-treated	+	160	6.283 128	<del>232.21</del>	<b>155.65</b>
with lid	Non-treated	-	160	6.283 131	<del>223.07</del>	<b>149.46</b>
without lid	Non-treated	-	160	6.283 129	<del>229.23</del>	<b>153.58</b>

## Cell culture flasks, treated, GL 45, PS, sterile



BIOFIL

- Innovative angled neck design offers good pipette and cell scraper access
- Stackable
- Special writing area near the neck
- Sterilized by gamma irradiation
- Pyrogen-free
- Individually packed in resealable outer packaging with zip fastener

**-5%**

Working volume	Culture surface	Cover type	PK	Cat. No.	Price	Now
ml	cm <sup>2</sup>				GBP	GBP
20	12.5	standard	200	4.675 617	<del>100.64</del>	<b>95.61</b>
20	12.5	vented	200	4.675 618	<del>121.71</del>	<b>115.62</b>
40	25.0	standard	200	4.675 619	<del>105.34</del>	<b>100.07</b>
40	25.0	vented	200	4.675 620	<del>117.09</del>	<b>111.24</b>
75	75.0	standard	100	4.675 621	<del>95.09</del>	<b>91.19</b>
250	75.0	vented	100	4.685 976	<del>96.25</del>	<b>91.44</b>
800	300.0	standard	18	6.314 340	<del>58.35</del>	<b>55.43</b>
800	300.0	vented	18	6.314 339	<del>75.85</del>	<b>72.06</b>

## Aspirator LLG-uniVACUUSYS



- Complete system
- Extensive accessories included

- Integrated vacuum pump with vacuum control
- Easy to use
- Self-closing connectors for quick installation and prevention of liquid or aerosol escape
- **Liquid level sensor**, prevents liquid overflow
- Autoclavable waste collection bottle and nozzle

**Scope of supply:** Vacuum Aspiration System with integrated vacuum pump, 4 liter waste collection bottle, single channel needles and 8-channel needle aspirator handles, single channel and 8-channel adaptor for 200 µl pipette tips, single channel adaptor for 1000 µl pipette, tubing and quick-connectors



### Specifications

Vacuum range: 0 ... 600 mbar (adjustable)  
 Aspiration rate: 1 ... 15 ml/s  
 Noise emission: <50 dB(A)  
 Dimensions (W x D x H): 180 x 320 x 530 mm  
 Weight: 3.4 kg  
 Power supply: 100 ... 240 V, 50/60 Hz

**-16%**

Type	Plug type	PK	Cat. No.	Price	Now
				GBP	GBP
LLG-uniVACUUSYS	EU	1	6.263 585	<del>859.45</del>	<b>721.94</b>
LLG-uniVACUUSYS	UK	1	6.263 586	<del>893.12</del>	<b>750.22</b>

## Cell and Tissue Culture Dishes, treated, PS, sterile

BIOFIL



Dishes with treated surface, suitable for adhesion cells.

- Easy and secure stacking
- Sterilized by gamma irradiation
- Pyrogen-free

**-18%**

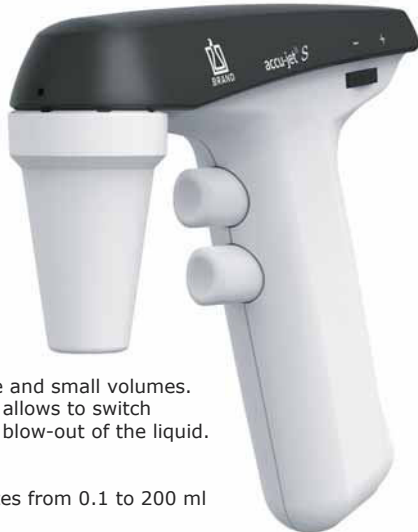
Diam.	Height	Culture surface	PK	Cat. No.	Price	Now
mm	mm	cm <sup>2</sup>			GBP	GBP
18	12	12.0	300	4.672 542	<del>87.44</del>	<b>71.70</b>
33	13	8.5	960	4.672 543	<del>170.28</del>	<b>139.63</b>
52	18	21.2	600	4.672 544	<del>138.09</del>	<b>113.23</b>
55	14	3.3	600	4.672 545	<del>158.81</del>	<b>130.22</b>
68	15	36.3	600	4.672 546	<del>138.09</del>	<b>113.23</b>
85	17	55.0	500	4.672 547	<del>156.84</del>	<b>128.61</b>
88	22	60.8	300	4.672 548	<del>98.21</del>	<b>80.61</b>
136	22	143.0	120	4.672 549	<del>160.10</del>	<b>131.28</b>
136	22	143.0	100	4.672 550	<del>117.69</del>	<b>96.51</b>



## Pipette controller accu-jet® S



- One-hand operation
- Integrated rest position



For precise pipetting of large and small volumes. The adjustable motor speed allows to switch between free flow and rapid blow-out of the liquid.

- One-hand operation
- For glass and plastic pipettes from 0.1 to 200 ml
- Precise volume setting
- Integrated rest position

### Scope of supply:

Pipette controller accu-jet® S, nickel-metal hydride battery, universal adapter (100 - 240 V, 50/60 Hz), with adapters for UK/EU/AUS/US, wall support, 2 sterile spare membrane filters (0.2 µm)

**-27%**

Colour	PK	Cat. No.	Price	Now
			GBP	GBP
anthracite	1	4.682 331	<del>427.46</del>	<b>312.05</b>
berry	1	4.682 332	<del>427.46</del>	<b>312.05</b>
petrol	1	4.682 333	<del>427.46</del>	<b>312.05</b>
amethyst	1	4.682 334	<del>427.46</del>	<b>312.05</b>

## Cell culture inserts for 6-well-, 12-well- and 24-well-plates



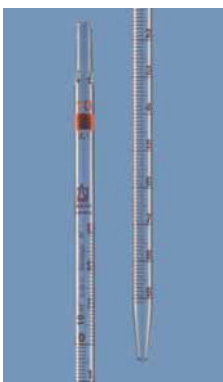
The BRAND Insert 2in1 is a cell culture insert used for skin model production, 3D epithelium cultures, chemotaxis analyses, transmigration assays, transport and polarity studies.

- cellGrade™ plus surfaces
- BIO-CERT Cell culture: free of pyrogens, DNA, DNase/RNase, free of cytotoxic substances
- To be used as a hanging or standing insert
- Sterility Assurance Level (SAL) of 10<sup>-6</sup>
- Suitable for 2D and 3D cell cultures
- Three point mounting
- Feet for standing use ensure an approx. 1 mm gap between membrane and bottom of the dish or well
- Removable hook for standing use

**-36%**

For	Membrane	Pore size µm	Package contents	PK	Cat. No.	Price	Now
						GBP	GBP
24-well-plates	PC	0.4	4 x 12 pieces	48	4.666 310	<del>270.23</del>	<b>172.95</b>
24-well-plates	PC	8.0	4 x 12 pieces	48	4.666 312	<del>270.23</del>	<b>172.95</b>
24-well-plates	PET	0.4	4 x 12 pieces	48	4.666 314	<del>270.23</del>	<b>172.95</b>
24-well-plates	PET	1.0	4 x 12 pieces	48	4.684 432	<del>270.23</del>	<b>172.95</b>
24-well-plates	PET	8.0	4 x 12 pieces	48	4.666 316	<del>270.23</del>	<b>172.95</b>
12-well-plates	PC	8.0	4 x 9 pieces	36	4.666 320	<del>224.78</del>	<b>143.86</b>
12-well-plates	PET	0.4	48 x 1 pieces	48	4.666 321	<del>222.37</del>	<b>212.72</b>
12-well-plates	PET	0.4	4 x 9 pieces	36	4.666 322	<del>224.78</del>	<b>143.86</b>
12-well-plates	PET	1.0	4 x 9 pieces	36	4.684 436	<del>224.78</del>	<b>143.86</b>
12-well-plates	PET	8.0	4 x 9 pieces	36	4.666 324	<del>224.78</del>	<b>143.86</b>
6-well-plates	PC	0.4	4 x 6 pieces	24	4.666 326	<del>197.51</del>	<b>126.41</b>
6-well-plates	PC	8.0	24 x 1 pieces	24	4.666 327	<del>212.99</del>	<b>136.31</b>
6-well-plates	PET	0.4	4 x 6 pieces	24	4.666 330	<del>197.51</del>	<b>126.41</b>
6-well-plates	PET	1.0	4 x 6 pieces	24	4.684 440	<del>197.51</del>	<b>126.41</b>
6-well-plates	PET	8.0	4 x 6 pieces	24	4.666 332	<del>197.51</del>	<b>126.41</b>

## Graduated pipettes, serological, AR-GLAS®, amber graduations



All BLAUBRAND® graduated pipettes are supplied with batch number and one batch certificate per packing unit.

- SILBERBRAND ETERNA
- Graduations and inscriptions in ETERNA amber stain
- Large tip diameter
- Tip diam. (1 and 2 ml): approx. 2 mm
- Tip diam. (5, 10 and 25 ml): approx. 3 mm
- Calibrated to deliver (TD, Ex)
- With cotton plug upper end

**-27%**

Volume	Graduations	Length	PK	Cat. No.	Price	Now
ml	ml	mm			GBP	GBP
1	0.01	360	1	7.018 389	<del>6.62</del>	<b>4.83</b>
2	0.02	360	1	7.018 390	<del>6.62</del>	<b>4.83</b>
5	0.1	360	1	7.018 391	<del>6.71</del>	<b>4.90</b>
10	0.1	360	1	7.018 392	<del>7.70</del>	<b>5.62</b>
25	0.1	450	1	6.231 857	<del>14.49</del>	<b>10.58</b>

### LLG-PCR-Tubes, 8 Strips, PP



- For 0.2 ml thermocycler blocks
- Detached cap strips can be used as individual tubes when cut
- With domed or flat caps
- Consistent wall thickness for uniform heat transfer
- Virgin polypropylene, certified RNase-, DNase- and Endotoxin-free

**-20%**

Description	PK	Cat. No.	Price	Now
			GBP	GBP
8 PCR tube strips plus detached cap strips, domed caps	125	6.313 412	<del>63.63</del>	<b>50.90</b>
8 PCR tube strips plus detached cap strips, flat caps	125	4.682 694	<del>47.43</del>	<b>37.94</b>

### LLG-PCR tubes with attached lids, PP



- Individual tubes
- Compatible with all common thermocyclers
- 0.2 ml or 0.5 ml
- Individual attached flat or domed snap caps
- Consistent wall thickness for uniform heat transfer
- Virgin polypropylene, certified RNase-, DNase- and Endotoxin-free

**-20%**

Description	PK	Cat. No.	Price	Now
			GBP	GBP
0.2 ml, single, flat cap	1000	6.313 401	<del>28.93</del>	<b>23.14</b>
0.2 ml, single, domed cap	1000	6.313 402	<del>28.93</del>	<b>23.14</b>
0.5 ml, single, flat cap	1000	6.313 403	<del>27.00</del>	<b>21.60</b>

### UV/PCR cabinets UVT-B-AR



#### UV exposure control with internal socket



Bench-top models for protection against contamination during a variety of DNA/RNA procedures.

- UV surface irradiation, via 1 x 25 W 254 nm open UV lamp
- UV exposure control, 24 hour digital timer
- White lamp provides local illumination of the workplace to optimise visual control during operations
- Automatic switch-off of open UV light when door opened
- With 1 x internal outlet

**-12%**

Type	External dimensions (W x D x H) mm	Plug type	PK	Cat. No.	Price	Now
					GBP	GBP
UVT-B-AR	690 x 585 x 555	EU	1	9.721 070	<del>2,295.00</del>	<b>2,019.60</b>
UVT-B-AR	690 x 585 x 555	UK	1	6.325 716	<del>2,295.00</del>	<b>2,019.60</b>

### Water, nuclease-free



Nuclease-free water is pure, quality-tested water suitable for use in all experiments that require nuclease-free water, including molecular biology applications. Nuclease-free water is prepared in a proprietary process, which yields DNase, RNase, and nuclease-free, deionized water without the use of chemical additives, such as diethylpyrocarbonate (DEPC).



**-36%**

Type	Nominal capacity ml	PK	Cat. No.	Price	Now
				GBP	GBP
Water, nuclease-free	1000	1	4.675 029	<del>38.48</del>	<b>24.63</b>

## Gel electrophoresis tank MultiSUB Mini



The MultiSUB mini is the smallest instrument in the series, designed for small and medium sample volumes. The small buffer volume of 225 ml increases the effectiveness of the analysis.

**Supplied with:** MultiSUB Mini DUO: 7 x 7 cm and 7 x 10 cm UV Tray, 2 x 8 sample combs.

### Specifications

Gel dimensions (W x L): 7 x 7 cm and 7 x 10 cm  
 Unit dimensions (W x L x H): 21 x 9 x 9 cm  
 Max. sample capacity: 7 x 7 cm tray, 32 samples  
 7 x 10 cm tray, 64 samples  
 Buffer volume: 225 ml

**-25%**

Description	PK	Cat. No.	Price	Now
			GBP	GBP
MultiSUB Mini DUO	1	7.920 043	<del>394.91</del>	<b>296.18</b>

## 32-well PCR rack, PP



For sampling and storage of PCR tubes. This rack accommodates individual 0.2 ml tubes, strips of 8, as well as 32-place assay plates (8x4).

- With removable, hinged lid
- Embossed numbers and letters for easy identification
- Stackable
- Autoclavable



**-36%**

Dimensions (W x D x H)	PK	Cat. No.	Price	Now
mm			GBP	GBP
175 x 98 x 31	10	6.491 881	<del>52.43</del>	<b>33.56</b>

## Power supply nanoPAC-300 Mini for gel electrophoresis tanks



The nanoPAC-300 is capable of running all Cleaver Scientific horizontal multiSUB™ systems and vertical omniPAGE mini gel systems.

- Maximum constant current output of 400 mA
- Simple two step feature to set a programmable change in voltage, current and time during the run
- Constant voltage up to 300 V
- Adjustable in 1 V and 1 mA increments
- Two parallel outputs
- Continuous run or timed setting up to 999 minutes
- Automatic safety shutdown
- Alarm function
- Easy-to-clean polycarbonate housing
- 3-digit LED display

**-25%**

Type	Rating	Supply requirements	PK	Cat. No.	Price	Now
	W				GBP	GBP
nanoPAC-300P Mini	60	300 V / 400 mA	1	6.272 711	<del>443.89</del>	<b>332.92</b>

## LLG-Agarose Standard



LLG-Agarose is ideal for routine separation of DNA and RNA fragments, as well as PCR products with electrophoresis. High transparency and low background of the agarose gel ensures clear and sharply defined bands.

- Very good dissolution and rapid gel formation
- High gel strength even at low agarose concentrations
- Suitable for agarose concentrations from 0.75 up to 2 %
- Good separation efficiency for nucleic acid fragments between 250 bp and 23 kb
- Free of DNase and RNase

Appearance: White powder  
 Clarity (NTU): ≤4 (1.5 % gel)  
 Gelling point: 36 ±1.5 °C (1.5 % gel)  
 Melting point: 88 ±1.5 °C (1.5 % gel)  
 Gel strength: ≥1000 g/cm<sup>2</sup> (1 % gel)  
 Sulphate: ≤0.15 %

**-16%**

Capacity	PK	Cat. No.	Price	Now
g			GBP	GBP
100	1	4.681 511	<del>44.51</del>	<b>37.39</b>
500	1	4.681 512	<del>194.99</del>	<b>163.79</b>

### Safety Bunsen Burner, schuett phoenix II

schuett**biotec**.de



For sterilising, heating, flame sterilising.  
 - Controlled burning time 1 sec to 120 min (selectable)  
 - Automatic safety shut-off (selectable)  
 - Overheating protection/burner control by sensors

**schuett phoenix II eco:** (with LED control lamp and foot-switch) Start flame by foot-switch or button (On/Off). Best suited for use in microbiological safety cabinets. Best price to performance ratio.  
**schuett phoenix II standard:** (brilliant colour display, selection of native language, sensor and foot-switch) Start/Stop flame by activating sensor 1x or 2x, use foot switch or press button by hand. Continuous display of timer.  
**schuett phoenix II accu:** (brilliant colour display, selection of native language, sensor and built-in extra heavy duty power cells) Start/stop flame by activating sensor 1x or 2x, use foot-switch or press button by hand. Continuous display of timer and battery power. Operates for up to 30 hours, intermittent use. Complete with battery charger for 3 hour recharging. Ideal for mobile usage.

**-5%**

Power supply: 100 - 240 V, 50/60 Hz

Type	PK	Cat. No.	Price	Now
			GBP	GBP
schuett phoenix II eco*	1	9.018 760	<del>396.00</del>	<b>376.20</b>
schuett phoenix II standard*	1	9.018 761	<del>522.00</del>	<b>495.90</b>
schuett phoenix II accu	1	9.018 762	<del>603.00</del>	<b>572.85</b>

\*incl. foot switch, stainless steel

### Petri dish turntables, schütt Petriturn

schuett**biotec**.de



manuell



electric

For uniform inoculation of petri dishes. Easy-to-use. Made in Germany.

**schütt petriturn-M**  
 With manually operated, heavy turntable for smooth and long-lasting rotation. Double-sided construction accommodates two sizes of petri dish (90 mm or 150 mm diameter), by inverting the turntable. Dimensions: (Ø x H) 160 x 45 mm.

**schütt petriturn-E**  
 Electrically driven (100 - 240 V, 50/60 Hz). Easy operation of the rotary table contact-free start via IR sensor (adjustable rotation time from 3 to 120 sec.), in continuous operation or optionally in foot switch mode. Infinitely adjustable speed from 10 to 120 rpm. For Petri dishes up to Ø 100 mm (Ø 150 mm optional). Compact housing made of stainless steel. Dimensions: (Ø x H) 160 x 70 mm.

**-5%**

### Inoculation loops "metal" and loop stands

schuett**biotec**.de



**Inoculation loops** made from stainless steel, special stainless steel wire or platinum-iridium wire (90/10). Can be heated to red heat. Length: 60 mm. Wire diameter: 0.5 mm.

**Inoculation loop holder** according to Kolle for 0.3 to 0.7 mm wire diameter. Stainless steel with handle. Fixed by union nut.

**Inoculation loop stand** accommodate up to 6 inoculation loop holders at any one time.

**-5%**

Type	Description	PK	Cat. No.	Price	Now
				GBP	GBP
P-1 1	Platinum-iridium	1	9.520 180	<del>44.10</del>	<b>41.90</b>
P-1 2	Platinum-iridium	1	9.520 181	<del>44.10</del>	<b>41.90</b>
P-1 3	Platinum-iridium	1	9.520 182	<del>44.10</del>	<b>41.90</b>
P-1 5	Platinum-iridium	1	9.520 184	<del>44.10</del>	<b>41.90</b>
W-1.5	Stainless steel	10	9.520 185	<del>24.30</del>	<b>23.09</b>
W-2.5	Stainless steel	10	9.520 186	<del>24.30</del>	<b>23.09</b>
W-4.0	Stainless steel	10	6.233 696	<del>24.30</del>	<b>23.09</b>
Inoculation loop stand R (round)	(Diam. x H) 80 x 50 mm	1	9.520 190	<del>54.00</del>	<b>51.30</b>
Inoculation loop stand L (long)	(L x W x H) 180 x 50 x 50 mm	1	9.520 191	<del>62.10</del>	<b>59.00</b>

Type	PK	Cat. No.	Price	Now
			GBP	GBP
schuett petriturn-M, manually driven	1	9.520 201	<del>175.50</del>	<b>166.73</b>
schuett petriturn-E, electrically driven	1	9.520 200	<del>404.10</del>	<b>383.90</b>
Foot pedal for schuett petriturn-E	1	9.520 203	<del>69.40</del>	<b>64.98</b>
Turntable adapter for Petri dishes up to 150 mm diameter	1	9.520 204	<del>58.50</del>	<b>55.58</b>

### LLG-Petri dishes, PS



Made of high quality optical clear polystyrene. Produced under aseptic conditions in an ISO 6 cleanroom. Packed in sleeves á 10 dishes or 20 dishes (90 mm diam. dishes).



**-20%**

Ext. diam. mm	Description	Height approx. mm	PK	Cat. No.	Price	Now
					GBP	GBP
60	with triple vents, aseptic	14	1080	6.323 696	<del>97.49</del>	<b>77.99</b>
60	without vents, aseptic	14	1080	6.323 697	<del>97.49</del>	<b>77.99</b>
90	with triple vents, aseptic	16	480	6.285 823	<del>54.37</del>	<b>43.50</b>
90	without vents, aseptic	16	480	6.285 824	<del>54.37</del>	<b>43.50</b>
60	with triple vents, sterile	14	1080	4.678 371	<del>117.49</del>	<b>93.99</b>
60	without vents, sterile	14	1080	4.678 372	<del>117.49</del>	<b>93.99</b>
90	with triple vents, sterile	16	480	6.285 816	<del>60.83</del>	<b>48.66</b>
90	without vents, sterile	16	480	6.285 817	<del>60.83</del>	<b>48.66</b>
150	with triple vents, sterile	19	140	4.680 144	<del>95.93</del>	<b>76.74</b>

## Luminometer Clean-Trace™ LM1



Simple, quick and reliable hand held diagnostic tool to verify cleaning effectiveness and capture, store and manage data for later analysis.

- Compact and easy-to-use
- Rapid results allow immediate corrective action
- To be used with the dry swabs 3M™ Clean-Trace™ UXL100, AQT200 and AQF100



Type	PK	Cat. No.	Price	Now
			GBP	GBP
Clean-Trace™ LM1	1	4.665 172	<del>2,810.16</del>	<b>2,669.65</b>

## LLG-Dry swabs, sterile



Description	PK	Cat. No.	Price	Now
			GBP	GBP
with Cotton tip and wooden stick, individually wrapped	1000	9.404 004	<del>48.11</del>	<b>38.49</b>
with Rayon tip and plastic stick, individually wrapped	1000	9.404 006	<del>51.56</del>	<b>41.25</b>
with clear Amies medium, Rayon tip and plastic stick, in PP test tube	150	9.404 007	<del>37.37</del>	<b>29.90</b>

## Culture Plates 3M™ Petrifilm™



- Ready to use
- 90 % less material volume
- Validated methods
- Time and energy saving
- Increased productivity and reliability
- Low operating costs
- Fast and reliable evaluation



Description	PK	Cat. No.	Price	Now
			GBP	GBP
Total bacteria count aerobic bacteria	100	6.237 738	<del>86.00</del>	<b>81.79</b>
Total bacteria count aerobic bacteria	1000	6.236 670	<del>762.80</del>	<b>724.75</b>
Rapid test coliforms	50	6.245 052	<del>63.45</del>	<b>60.28</b>
Bacteria count <i>E.coli</i>	50	6.269 819	<del>67.00</del>	<b>64.51</b>
Bacteria count Enterobacteriaceae	50	6.251 171	<del>53.45</del>	<b>50.78</b>
Bacteria count Enterobacteriaceae	1000	6.257 509	<del>778.40</del>	<b>739.57</b>
Bacteria count <i>S. aureus</i>	50	6.257 510	<del>86.58</del>	<b>82.25</b>
Rapid test Yeast and Fungi	50	6.282 104	<del>93.60</del>	<b>88.92</b>
Bacteria count Yeast and Fungi	100	7.657 837	<del>123.65</del>	<b>117.47</b>
Bacteria count Yeast and Fungi	1000	6.257 514	<del>801.22</del>	<b>761.16</b>
Lactic acid bacteria	50	4.662 133	<del>99.58</del>	<b>94.60</b>
Rapid detection of aerobic bacteria	50	6.274 512	<del>80.46</del>	<b>76.44</b>

## Dry Swabs Clean-Trace™



Type	Description	PK	Cat. No.	Price	Now
				GBP	GBP
MPRO50	Surface Protein Plus	50	4.665 741	<del>175.32</del>	<b>166.55</b>
ATP	Positive control for surface	100	4.672 003	<del>288.90</del>	<b>274.46</b>

## Dry swabs for Luminometer 3M™ Clean-Trace™ NG3/LM1



Type	Description	PK	Cat. No.	Price	Now
				GBP	GBP
ATP UXL100	Dry swabs for surfaces	100	6.243 230	<del>293.44</del>	<b>278.77</b>
Water AQF100	Dry swabs, free ATP	100	6.261 832	<del>308.13</del>	<b>292.72</b>

### Microscopes, RED 30S

**!** Ideal for education



With independent LED illumination. The modern fixed-arm stands with integrated carrying handle ensure a stable stand and easy transport.

- With magnification changer (2x, 4x)
- Binocular head, 45° inclined
- Widefield eyepieces WF10X/20 mm
- Objective turret magnification changer (2X, 4X)
- Coarse focusing system with tension adjustment
- Base with fixed arm and carrying handle
- Incident and transmitted rechargeable LED illumination with independent intensity control
- Power supply 100-240 V (CE), charger and batteries included
- Black/white and frosted stage plates, "one-touch" sample clips and dust cover
- 10 years warranty

**-20%**

Type	Description	PK	Cat. No.	Price	Now
				GBP	GBP
RED 30S	Binocular	1	6.281 648	<del>237.60</del>	<b>190.08</b>

### Superfrost® Plus adhesive microscope slides



Plus



Plus Gold



Size: 75 mm x 25 mm x 1.0 mm. Ground edges 90°, white SuperFrost marking area. A new application method provides the surface of a slide with a permanent positive charge. Electrostatic attraction binds fresh, frozen tissue sections and cytology preparations. Also available with blue, yellow, pink or green SuperFrost marking area.

**-21%**

Type	PK	Cat. No.	Price	Now
			GBP	GBP
SuperFrost® Plus	72	9.161 155	<del>18.80</del>	<b>14.85</b>
SuperFrost® Plus Gold (suitable for thicker tissue sections)	72	6.700 125	<del>53.16</del>	<b>42.00</b>

### Digital refractometer ORL

**!** 2 scales in one device



Accurate and maintenance-free digital benchtop refractometer with 2 scales, for universal applications in the laboratory.

- Large multifunction display with integrated temperature display
- Automatic temperature compensation (ATC)
- Calibration with distilled water

#### Scope of supply:

Digital refractometer, pipette, storage case, USB cable, power adapter, screwdriver

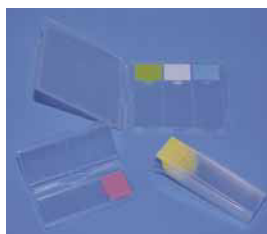
#### Specifications

Minimum sample volume: 0.3 ... 0.4 ml  
 Temperature range: 0 ... 40 °C  
 Power supply: USB connection or 1 × rechargeable battery 3.7 V, 3000 mA (not included in scope of supply)  
 Dimensions (W x D x H): 180 x 100 x 55 mm  
 Weight: 365 g

**-27%**

Type	Measuring range	Accuracy	PK	Cat. No.	Price	Now
					GBP	GBP
ORL 94BS	0 ... 94 % Brix 1,3330 ... 1,5290 nD	± 0,1 % Brix ± 0,0002 nD	1	6.321 932	<del>828.00</del>	<b>604.44</b>

### LLG-Slide mailers



Manufactured from high density polypropylene, for shipping, storing or staining slides. Flat mailers can hold 1, 2, 3 or 5 standard (up to 76 mm x 26 mm) slides securely.

- Light weight and flat
- With marking area and "Top" printed on top surface
- With large, easy-to secure snaps.
- Slotted channels inside mailer keep slides safely separated

**-25%**

To hold microscope slides	PK	Cat. No.	Price	Now
			GBP	GBP
1	10	9.161 291	<del>6.98</del>	<b>5.24</b>
2	10	9.161 292	<del>8.47</del>	<b>6.35</b>
3	10	9.161 293	<del>11.26</del>	<b>8.45</b>
5	10	9.161 294	<del>11.42</del>	<b>8.57</b>

## Spectrophotometers XD 7000 VIS and XD 7500 UV-VIS



UV-VIS and VIS spectrophotometers with dual beam optics. Further functions of the spectrophotometers include measurement of transmission and absorbance, scanning of spectra, kinetics analysis and creation of user-defined methods.

- Premium optical system with reference beam
- Automatic test recognition with internal barcode reader
- Supports round cuvettes with 13, 16, 24 mm and rectangular cuvettes with 10, 20, 50 mm
- Automatic cuvette type detection
- More than 150 analytical methods implemented
- 7" colour display and keypad
- Ethernet, USB
- 20 user profiles possible
- Up to 1000 user programmes
- Creation of up to 100 further user-defined methods
- Password protection possible
- Universal power supply with adapters EU/UK/US

### Specifications

<b>Optical System:</b>	<b>XD 7000 VIS // XD 7500 UV-VIS</b>
<b>Wavelength range:</b>	grid monochromator with reference beam 320 - 1100 nm // 190 - 1100 nm
<b>Bandwidth:</b>	4 nm
<b>Wavelength accuracy:</b>	±1 nm on all Holmium peaks
<b>Wavelength repeatability:</b>	better than 0.5 nm
<b>Photometric range:</b>	-3.3 to +3.3 Abs
<b>Photometrical resolution/Transmission:</b>	0.001 Abs/0.1 %
<b>Photometric accuracy/repeatability:</b>	0.003 Abs below 0.6 Abs 0.5 % from 0.6 to 2.0 Abs
<b>Photometrical linearity:</b>	<1 % up to 2.0 Abs between 340 to 900 nm
<b>Drift:</b>	<0.005 Abs per hour after 15 minutes heat up time
<b>Internal Storage:</b>	40 MB for approx. 5000 data sets
<b>Lamps:</b>	Tungsten-halogen-lamp // Xenon flash lamp
<b>Dimension (W x D x H):</b>	422 x 323 x 195 mm
<b>Weight:</b>	approx. 4.5 kg
<b>Power supply:</b>	100 - 240V, 50/60 Hz
<b>Protection class:</b>	IP 30

**-10%**

Type	PK	Cat. No.	Price	Now
			GBP	GBP
XD 7000 VIS	1	6.272 436	<del>3,701.79</del>	<b>3,412.61</b>
XD 7500 UV-VIS	1	6.272 437	<del>6,516.81</del>	<b>5,865.13</b>

## LLG-Disposable plastic cells, PS



The shape and narrow wall thickness of the cuvettes enable an excellent heat transfer resulting in constant sample temperatures during photometric measurements.

- Cavity sorted
- Glass clear polystyrene (PS)
- Applicable wavelength range 340 nm to 900 nm
- Path length 10 mm
- Overall dimensions 12.5 mm x 12.5 mm x 45 mm
- Styrofoam racks: 100 cuvettes in a styrofoam box with cover

**-27%**

Description	Capacity	PK	Cat. No.	Price	Now
	ml			GBP	GBP
Macro	4.0	100	9.406 011	<del>5.60</del>	<b>4.09</b>
Semi-micro	1.6	100	9.406 012	<del>6.06</del>	<b>4.42</b>

## LLG-Cuvettes, glass



LLG-Cuvettes have two clear windows, two side walls and they are available as optical glass or in quartz variants. The walls and the base are polished inside and frosted outside. The thickness of the windows and the base is 1.25 mm. The overall height of standard type cells is 45 mm or 48 mm. Each cuvette is supplied with a PTFE lid.

- Optical Glass: 335 to 2500 nm
- Quartz: 200 to 2700 nm

**-16%**

Type	Volume	Path length	PK	Cat. No.	Price	Now
	ml	mm			GBP	GBP
quartz glass	3.5	10	2	4.681 513	<del>67.89</del>	<b>57.03</b>
quartz glass	17.5	50	2	4.681 514	<del>241.97</del>	<b>203.25</b>
optical glass	3.5	10	4	4.681 515	<del>45.85</del>	<b>13.31</b>
optical glass	17.5	50	4	4.681 516	<del>33.93</del>	<b>28.50</b>

## LLG-Cuvette rack, PP



Ideal for storing up to 16 cuvettes with 12.5 mm width. Two-tier arrangement of the cuvette rows ensures clarity.

- Numbered positions
- Autoclavable at 121 °C

**-25%**

Length	Width	Height	PK	Cat. No.	Price	Now
mm	mm	mm			GBP	GBP
210	70	35	1	4.682 061	<del>8.64</del>	<b>6.48</b>



## SIL G unmodified standard silica layers for TLC, glass plates/ POLYGRAM®

### Support materials for TLC ready-to-use layers



**Glass plates:** glass, ~ 1.3 mm thick, high requirements for weight, packaging and storage, ideal torsional strength, high temperature stability, susceptible to breakage, can not be cut with scissors, high resistance against solvents, mineral acids and conc. ammonia, suitability for aqueous detection reagents depends on the phase

**POLYGRAM®:** polyester, ~ 0.2 mm thick, low requirements for weight, packaging and storage, low torsional strength, max. 185 °C temperature stability, not susceptible to breakage, can be cut with scissors, high resistance against solvents, mineral acids and conc. ammonia, very suitable for aqueous detection reagents

**ALUGRAM®:** aluminium, ~ 0.15 mm thick, low requirements for weight, packaging and storage, relatively high torsional strength, high temperature stability, not susceptible to breakage, can be cut with scissors, high resistance against solvents, low resistance against mineral acids and conc. ammonia, limited suitability for aqueous detection reagents

### Glass plates, POLYGRAM®, ALUGRAM®

- Silica 60
- Specific surface (BET) ~500 m<sup>2</sup>/g
- Mean pore size 60 Å
- Specific pore volume 0.75 ml/g
- Particle size 5 to 17 µm
- Indicators: manganese-activated zinc silicate with green fluorescence in short-wave UV light (254 nm).
- Available with or without fluorescent indicator (UV<sub>254</sub>)



-17%

Type	Plate format cm	Gel thickness mm	PK	Cat. No.	Price	Now
					GBP	GBP
Glass plates SIL G-25 UV <sub>254</sub>	10 x 20	0.25	50	6.230 274	<del>182.70</del>	151.64
Glass plates SIL G-25	20 x 20	0.25	25	9.003 491	<del>162.00</del>	135.21
Glass plates SIL G-25 UV <sub>254</sub>	20 x 20	0.25	25	9.003 492	<del>162.00</del>	135.21
POLYGRAM® polyester sheets SIL G UV <sub>254</sub>	4 x 8	0.20	50	9.003 493	<del>34.92</del>	28.98
POLYGRAM® polyester sheets SIL G UV <sub>254</sub>	5 x 20	0.20	50	9.003 476	<del>60.03</del>	58.04
POLYGRAM® polyester sheets SIL G UV <sub>254</sub>	20 x 20	0.20	25	9.003 494	<del>127.80</del>	106.07
ALUGRAM® aluminium sheets SIL G UV <sub>254</sub>	4 x 8	0.20	50	9.003 496	<del>34.92</del>	28.98
ALUGRAM® aluminium sheets SIL G	5 x 7,5	0.20	20	4.005 042	<del>23.13</del>	19.20
ALUGRAM® aluminium sheets SIL G UV <sub>254</sub>	5 x 10	0.20	50	9.003 477	<del>53.10</del>	44.07
ALUGRAM® aluminium sheets SIL G UV <sub>254</sub>	5 x 20	0.20	50	9.003 478	<del>60.03</del>	58.04
ALUGRAM® aluminium sheets SIL G UV <sub>254</sub>	10 x 20	0.20	20	6.233 568	<del>61.38</del>	50.95
ALUGRAM® aluminium sheets SIL G	20 x 20	0.20	25	7.059 745	<del>127.80</del>	106.07
ALUGRAM® aluminium sheets SIL G UV <sub>254</sub>	20 x 20	0.20	25	9.003 497	<del>60.11</del>	57.36
ALUGRAM® aluminium sheets Xtra SIL G UV <sub>254</sub>	4 x 8	0.20	50	6.259 756	<del>34.92</del>	28.98
ALUGRAM® aluminium sheets Xtra SIL G UV <sub>254</sub>	5 x 10	0.20	50	7.638 354	<del>53.10</del>	44.07
ALUGRAM® aluminium sheets Xtra SIL G UV <sub>254</sub>	20 x 20	0.20	25	6.242 312	<del>60.11</del>	57.36

### Special atomiser



With rubber blowball for nebulising reagents.



-5%

Type	PK	Cat. No.	Price	Now
			GBP	GBP
Special atomiser	1	9.024 000	<del>85.50</del>	81.23

### Standard separating chamber



Flat chamber floor with glass ridge, for all TLC plates up to 200 mm x 200 mm. Filter paper for gas space saturation to optimize the separation results.



-5%

Type	PK	Cat. No.	Price	Now
			GBP	GBP
Separating chamber 200 x 200 mm with glass lid	1	6.311 891	<del>251.10</del>	238.55
Filter paper for chamber saturation	25	9.020 179	<del>42.30</del>	40.19

### UV analysis lamp



2 x 6 W Analysis lamp with two separately switchable UV tubes of high radiation intensity. The UVA tube produces long-wave radiation at 365 nm and the UVC tube short-wave radiation at 254 nm. Ideal for chemical-analytical applications and for hygiene monitoring.

Please order table stand separately.

-10%

Type	Plug type	PK	Cat. No.	Price	Now
				GBP	GBP
UV analysis lamp	EU	1	4.690 306	<del>325.80</del>	293.22
UV analysis lamp	UK	1	6.325 683	<del>321.71</del>	298.54
Table stand	-	1	4.690 307	<del>46.80</del>	42.12

## SafetyCaps Generation 2.0, GL 45



Maximum safety for HPLC solvent supply. The integrated air valve (B) blocks hazardous vapours and cleans the inflowing air (M) from dust and dirt particles. Safe solvent supply. With integral air filter vent. For maximum efficiency, we recommend that the vent is changed every 6 months. The filter membrane absorbs dust and dirt particles to protect your solvent reservoirs.

-15%

Description	Connections	PK	Cat. No.	Price	Now
				GBP	GBP
SafetyCaps I (V 2.0)	1 capillary (3.2 mm o.d.)	1	4.669 370	<del>76.41</del>	<b>64.95</b>
SafetyCaps II (V 2.0)	2 capillaries (3.2 mm o.d.)	1	4.669 371	<del>85.41</del>	<b>72.60</b>
SafetyCaps III (V 2.0)	3 capillaries (3.2 mm o.d.)	1	4.669 372	<del>89.91</del>	<b>76.42</b>

## Air valves Generation 2.0 for SafetyCaps



- Thread size UNF 1/4" 28G
- Luer Lock adapter
- PTFE Filter
- Valve membrane blocks vapours and opens at negative pressure
- It is recommended to replace the valve every 6 months

-10%

Type	Flow rate amount m/min	PK	Cat. No.	Price	Now
				GBP	GBP
Refill pack of 8	400	8	6.318 227	<del>161.10</del>	<b>144.99</b>
Refill pack of 10	400	10	4.669 376	<del>197.10</del>	<b>177.39</b>
Refill pack of 50	400	50	4.669 377	<del>863.10</del>	<b>776.79</b>

## Safety Waste Caps V3.0



- Universally expandable
- Extensive accessories



Safety Waste Cap for connecting 4 capillaries (UNF 1/4" 28 G), 3 tube connectors (NPT 1/8") and an exhaust filter (GL 14). With freely movable cap for simple exchange of the container.

**Scope of supply:** Screw cap (PPS), satellite (PTFE, white), blind plug M 30x35 (PTFE), PFA fittings: 4 x 1.6 mm (green), 4 x 2.3 mm (violet), 4 x 3.2 mm (blue), 4 blind plugs for capillary connections (PFA, transparent), 3 tube connectors for tubes with 5.0 - 11.5 mm ID (PP, blue), 3 blind plugs for tube connections (PTFE, white), 1 blind plug GL 14 (PTFE, white)

-15%

Thread	PK	Cat. No.	Price	Now
			GBP	GBP
GL 45	1	4.683 850	<del>138.60</del>	<b>117.81</b>
S 55	1	4.683 889	<del>138.60</del>	<b>117.81</b>
S 60/61	1	4.683 890	<del>138.60</del>	<b>117.81</b>

## Seasand for Chromatographic columns



Acid washed, calcined. Pack of 1000 g.

-20%

Description	PK	Cat. No.	Price	Now
			GBP	GBP
Seasand	1	6.700 265	<del>39.78</del>	<b>31.82</b>

## LLG-Buckets, PP



White. With lid and temper-evident closure. Stability guaranteed when filling up with material up to 80 °C.

**-20%**

Capacity	Diam.	Height	PK	Cat. No.	Price	Now
Litres	mm	mm			GBP	GBP
1	131	127	10	6.291 418	<del>6.71</del>	<b>5.37</b>
2	179	133	10	6.291 419	<del>12.05</del>	<b>9.64</b>
3	198	141	10	6.291 420	<del>13.18</del>	<b>10.54</b>
5	224	193	10	6.291 421	<del>14.05</del>	<b>11.96</b>
10	266	265	10	6.291 422	<del>27.32</del>	<b>21.86</b>

## LLG-Sample containers, PP, with screw cap, PP



White, with screwed-on lid.

**-20%**

Nominal capacity	Ø with Cover	Height	PK	Cat. No.	Price	Now
ml	mm	mm			GBP	GBP
30	58	19	10	9.402 310	<del>8.60</del>	<b>6.88</b>
75	58	47	10	9.402 313	<del>10.49</del>	<b>8.39</b>
310	81	81	10	9.402 318	<del>12.56</del>	<b>10.05</b>
600	119	67	10	9.402 321	<del>20.83</del>	<b>16.66</b>
1250	119	130	5	9.402 324	<del>45.01</del>	<b>12.01</b>

## LLG-Aspirator Bottles, narrow neck, HDPE, with stopcock



With carrying handle and 3/4" stopcock. Thread and opening for stopcock provided. Suitable for food. With gasket in the screw cap for a very tight seal. Screw cap can be attached to the bottle using the integrated loops. The bottles can be used by temperature from -40 °C to +80 °C. Please use only in upright position.

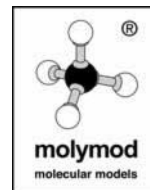
**-20%**

Capacity	Body diam.	Height	PK	Cat. No.	Price	Now
l	mm	mm			GBP	GBP
5	160	350	1	9.139 933	<del>11.21</del>	<b>8.97</b>
10	210	430	1	9.139 934	<del>12.84</del>	<b>10.27</b>
25	270	570	1	9.139 935	<del>30.13</del>	<b>24.10</b>
50	350	690	1	9.139 936	<del>44.92</del>	<b>35.94</b>

## Molecular model system miniDNA®



**Ideal for education**



The advanced miniDNA® system comprises colour-coded, abstract-shaped parts designed to represent the nitrogenous bases, pentagonal sugar and pyramidal phosphate components needed to make a double-helix model of DNA. The three hydrogen bonds that connect Cytosine to Guanine and the two that connect Thymine to Adenine are represented by the appropriate number of pegs. Two DNA kits are available to make either a 12-layer (1 turn) or 22-layer (2 turns) DNA model. The models can be displayed on their stands, or unzipped into a ladder form to demonstrate the process of Replication.

**-25%**

## Adhesive rubber mat



**Universally applicable**

**-9%**

Description	PK	Cat. No.	Price	Now
			GBP	GBP
Adhesive rubber mat, blue, 150 x 150 x 3 mm	2	6.263 598	<del>54.00</del>	<b>49.14</b>

Description	PK	Cat. No.	Price	Now
			GBP	GBP
12-layer Kit	1	6.261 370	<del>28.71</del>	<b>21.53</b>
22-layer Kit	1	6.261 344	<del>50.25</del>	<b>37.69</b>

## LLG-Disposable syringes, 3-parts, PP, non-sterile, bulk



- Barrel: PP, Plunger: PP and Polyisoprene rubber
- Smooth flow, tight, high transparency barrel
- Latex-free, pyrogen-free, DEHP-free, non-toxic
- Defined safety stop to avoid accidental pull-out of plunger
- Suitable for all syringe filters with Luer connection

**-20%**

Capacity ml	Nozzle type	PK	Cat. No.	Price GBP	Now GBP
2	Luer-Slip	500	6.267 267	<del>20.89</del>	<b>16.71</b>
5	Luer-Slip	500	6.267 268	<del>23.07</del>	<b>18.46</b>
10	Luer-Slip	500	6.267 269	<del>25.61</del>	<b>28.49</b>
20	Luer-Slip	500	6.267 270	<del>58.97</del>	<b>47.18</b>
2	Luer-Lock	500	6.286 616	<del>21.92</del>	<b>17.54</b>
5	Luer-Lock	500	6.286 617	<del>24.22</del>	<b>19.38</b>
10	Luer-Lock	500	6.286 618	<del>27.23</del>	<b>29.86</b>
20	Luer-Lock	500	6.286 619	<del>61.86</del>	<b>49.49</b>

## LLG-Syringe filters SPHEROS, PVDF



Hydrophilic membrane for aqueous polar and light unpolar solutions. Very low protein binding, suitable for high flow rates. Ideal for use with biological macromolecules, water soluble oligomers and polymers. With female Luer-Lock inlet and male Luer-Slip outlet. Sterile products in individual hard blister packaging and dispenser box.

**-20%**

Filter diam. mm	Pore size µm	Housing	Sterile	PK	Cat. No.	Price GBP	Now GBP
13	0.22	PP, blue	-	100	4.685 651	<del>26.13</del>	<b>28.90</b>
13	0.45	PP, blue	-	100	4.685 652	<del>36.13</del>	<b>28.90</b>
25	0.22	PP, blue	-	50	4.685 653	<del>33.06</del>	<b>26.45</b>
25	0.45	PP, blue	-	50	4.685 660	<del>33.06</del>	<b>26.45</b>
13	0.22	PP, blue	+	100	4.685 654	<del>42.65</del>	<b>34.12</b>
13	0.45	PP, blue	+	100	4.685 655	<del>42.65</del>	<b>34.12</b>
25	0.22	PP, blue	+	45	4.685 656	<del>32.90</del>	<b>26.32</b>
25	0.45	PP, blue	+	45	4.685 657	<del>32.90</del>	<b>26.32</b>

## Syringe filter Minisart® RC, Male Luer Slip



Housing PP. Regenerated cellulose (RC). Ready-to-use units with a hydrophilic, solvent-resistant membrane made of regenerated cellulose, making sample preparation quick and easy. Suitable for aqueous/organic solutions.

**-25%**

Filter diam. mm	Pore size µm	Colour	Sterile	PK	Cat. No.	Price GBP	Now GBP
25	0.20	White, Printed	+	50	7.076 270	<del>121.19</del>	<b>90.89</b>
25	0.20	White, Printed	-	50	9.049 094	<del>109.39</del>	<b>82.04</b>
25	0.20	White, Printed	-	500	9.049 095	<del>742.90</del>	<b>557.18</b>
25	0.45	White, Printed	-	50	9.049 097	<del>109.39</del>	<b>82.04</b>
25	0.45	White, Printed	-	500	9.049 098	<del>742.90</del>	<b>557.18</b>
15	0.20	White, Printed	+	50	7.075 954	<del>109.39</del>	<b>82.04</b>
15	0.20	White, Printed	-	500	9.049 088	<del>686.99</del>	<b>515.24</b>
15	0.45	White, Printed	-	50	9.049 091	<del>100.75</del>	<b>75.56</b>
4	0.20	Blue Tray	-	50	9.049 081	<del>67.35</del>	<b>50.51</b>
4	0.45	Yellow Tray	-	50	9.049 084	<del>67.35</del>	<b>50.51</b>

## LLG-Inline filters, PTFE



LLG-Inline filters with PP housing. The PTFE membrane is particularly suitable for filtration of aggressive chemicals, including acids and non-aqueous solutions.

- Multiple autoclavable at 121 °C for 20 minutes at 2 bar, max. 3 cycles
- High throughput with low pressure drop
- For air and gases in both directions

**-20%**

Diam. mm	Pore size µm	PK	Cat. No.	Price GBP	Now GBP
50	0.22	20	4.685 658	<del>39.02</del>	<b>31.22</b>
50	0.45	20	4.685 659	<del>39.02</del>	<b>31.22</b>

### Chemical Protection Glove Ultranitril 381, Nitrile

EN ISO 374-1  
Type A  
EN ISO 374-5



Chemical protective glove made of nitrile with glued cotton liner for long term comfort. Anatomic shape. Z-pattern-profile for safe grip of wet things. More dexterity due to the glued cotton knit lining, which offers excellent comfort and thermal insulation. Excellent resistance against oils, greases and many solvents. 1 pair per pack.

Length: 355 mm  
Thickness: 0.85 mm  
Colour: Green  
CE: **Cat. III**

**-5%**

Size	PK	Cat. No.	Price	Now
			GBP	GBP
S (7)	1	9.005 206	<del>8.93</del>	<b>8.48</b>
M (8)	1	9.005 207	<del>8.93</del>	<b>8.48</b>
L (9)	1	9.005 208	<del>8.93</del>	<b>8.48</b>
XL (10)	1	9.005 209	<del>8.93</del>	<b>8.48</b>

### Disposable gloves Kimtech™ Opal™, nitrile

EN ISO 374-1  
Type B  
EN ISO 374-5



The disposable gloves guard against contamination by chemical splash and micro-organism hazards.

- Powder free
- High tactile sensitivity
- With beaded cuff and textured fingertips
- Good wet and dry grip
- Improved comfort for extended wearing time
- Ambidextrous
- AQL 1.5
- **Cat III**

According to EN ISO 374-1 Type B (KPT), EN 374-4, EN ISO 374-5. Manufactured in accordance with Quality System ISO 9001 and ISO 13485.

**-44%**

Size	Length	Thickness	PK	Cat. No.	Price	Now
	mm	mm			GBP	GBP
XS	240	0.07	200	4.684 352	<del>23.01</del>	<b>12.89</b>
S	240	0.07	200	4.684 353	<del>23.01</del>	<b>12.89</b>
M	240	0.07	200	4.684 354	<del>23.01</del>	<b>12.89</b>
L	240	0.07	200	4.684 355	<del>23.01</del>	<b>12.89</b>
XL	240	0.07	170	4.684 356	<del>19.54</del>	<b>10.94</b>

### LLG-Overall tritex® pro White, Type 5/6, PP



Particle-tight, and to a limited extent, spray-tight chemical protective clothing.

The coverall made of 3-layer SMS material (spunbond-meltblown-spunbond) is robust and breathable. A meltblown filter membrane is embedded between two durable outer layers. Comfortable to wear, this coverall is a pleasant, protective companion in many work areas. Special features are the hood, the zipper cover strip, the back rubber element, and the arm and leg rubber elements.

- antistatic
- lint-free
- abrasion resistant
- breathable

**Cat. III/CE 0624/Type 5/6**

**Coverall individually packed!**



**-20%**

Size	PK	Cat. No.	Price	Now
			GBP	GBP
L	5	6.266 641	<del>25.09</del>	<b>20.07</b>
XL	5	6.266 642	<del>25.09</del>	<b>20.07</b>
XXL	5	6.266 643	<del>25.09</del>	<b>20.07</b>

### Skin Protection Cream LINDESA® K PROFESSIONAL with Beeswax and Chamomile



**Quickly absorbed**



**-27%**

Capacity	PK	Cat. No.	Price	Now
			GBP	GBP
ml 100	10	6.317 296	<del>37.80</del>	<b>27.59</b>

## LLG-Safety Eyeshields *comfort*



- CE approved to EN166, EN170
- Panoramic wrapping lens
- 180° field of vision
- Frame made of tested hypo-allergenic material
- Side arms adjustable in length
- Nose pad and arm tips are made from soft, mouldable material offer optimal comfort and individual customisation
- Rubber eyebrow protection for greater shock absorption
- 100 % UV protection (up to 400 nm)
- Lightweight: 30 g only

**-25%**

Lens	PK	Cat. No.	Price	Now
clear, anti-scratch plus and anti-fog lens plus, 2C-1.2 U 1 FT CE	1	6.312 450	GBP <del>8.73</del>	GBP <b>6.55</b>

## LLG-Dispenserbox, Acrylic Glass



With hinged lid. For storage of laboratory tools, e.g. laboratory goggles, gloves or other small items.  
Wall mounting possible (mounting material included)

- for about 12 goggles

**-20%**

Description	Dimensions (W x D x H) mm	PK	Cat. No.	Price	Now
LLG-Dispenserbox	216 x 216 x 200	1	6.286 593	GBP <del>27.88</del>	GBP <b>22.30</b>

## Disposable Face Mask, Profil Plus



Disposable surgical face mask with Earloops, non-sterile, 3-layer non-fiber-glass filter medium.

- Three layers of protection
- Soft elastic earloops
- Integrated nosepiece
- Latex free
- Nickel free
- EN 14683 Type II R, CE
- Box with 50 pieces

**-36%**

Colour	Width mm	Length mm	PK	Cat. No.	Price	Now
blue	95	175	500	6.320 157	GBP <del>31.99</del>	GBP <b>20.47</b>
white	95	175	500	6.320 162	GBP <del>31.99</del>	GBP <b>20.47</b>
green	95	175	500	6.320 158	GBP <del>31.99</del>	GBP <b>20.47</b>
pink	95	175	500	6.322 924	GBP <del>31.99</del>	GBP <b>20.47</b>
black	95	175	500	6.322 923	GBP <del>31.99</del>	GBP <b>20.47</b>

## Eye Wash Bottle, 0.9 % NaCl, Sterile



- choice of 0.2 litre (washing time approx. 2 minutes) or 0.5 litre (washing time approx. 5 minutes) bottles
- Duo wash bottle for both eyes 1000 ml (washing time approx. 5 minutes)
- Ergonomic eye cup - keeps the eyes open during application
- Saline solution (0.9 %), conforming to the natural salinity of the eye
- According to DIN EN 15154-4

**NEW: eye wash bottle DUO for simultaneous washing of both eyes**

**-20%**

Description	PK	Cat. No.	Price	Now
Eye wash bottle 0,9 % NaCl, 200 ml	1	9.733 794	GBP <del>9.05</del>	GBP <b>7.24</b>
Spare eyewash bottle, 0,9 % NaCl, 500 ml	1	9.733 793	GBP <del>12.31</del>	GBP <b>9.85</b>
Eye wash bottle DUO 0,9 % NaCl, 1000 ml	1	6.240 397	GBP <del>27.50</del>	GBP <b>22.00</b>

## LLG-Lab Stool



The extra-large seat provides optimum comfort. The solid black plastic star base and the upholstery edge protector that runs all the way round guarantee a long working life. The practical gas spring system with easy ring control allows a comfortable seat height adjustment.

- Resistant to all of the usual disinfectants and chemicals.
- Seat upholstery made of artificial leather, 400 mm diameter (soft and comfortable, washable and antibacterial) or soft-touch PU foam, 350 mm diameter (extremely robust, washable and antibacterial) in black.
- Seat height adjustment by gas spring.
- Solid black plastic star base, flat design.
- The chrome-plated foot ring for the high chairs provides support through the wide tread area and can be easily and quickly adjusted in height.
- With certificate "Tested Safety" (GS mark).
- 10 years warranty, Made in Germany.

**-16%**

Description	Material	Seat height adjustment	PK	Cat. No.	Price	Now
		mm			GBP	GBP
Castors	PU foam	460 ... 630	1	6.287 757	<del>133.30</del>	<b>111.97</b>
Glides, foot ring	PU foam	570 ... 850	1	6.287 759	<del>169.65</del>	<b>142.51</b>
Castors	Artificial leather	460 ... 630	1	6.287 758	<del>129.83</del>	<b>109.06</b>
Glides, foot ring	Artificial leather	570 ... 850	1	6.287 760	<del>165.99</del>	<b>139.43</b>

## Folding steps K80



Made of aluminum, with large steel steps of 30 x 21 cm and anti-slip mats, black. Narrowly foldable to 5 cm. Can be loaded up to 150 kg.

**-6%**

Number of steps	Height*	PK	Cat. No.	Price	Now
				GBP	GBP
2	46	1	4.668 331	<del>62.99</del>	<b>59.21</b>
3	69	1	7.623 704	<del>80.99</del>	<b>76.13</b>

\* Height of first step (cm)

## LLG-Lab Standing Rest



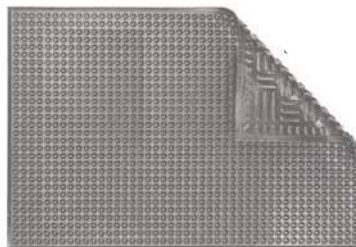
The LLG-Lab Standing Rest is the practical solution for laboratory workplaces where people have to sit as well as to stand. To cope with this, it has a particularly wide range of heights that can be adjusted steplessly. Its ergonomic backrest and non-slip wave seat surface ensure that you feel completely safe and comfortable when you sit on it.

- Resistant to all of the usual disinfectants and chemicals.
- Seat upholstery made of soft-touch PU foam (extremely robust, washable and antibacterial) in black.
- Adheres to biosafety level BSL1 and BSL2 of the Directive for Biological Agents.
- GMP-conform.
- Rippled wave seat surface: Slip-resistant and offers a very good support and excellent ventilation.
- Integrated backrest: Best support of the lumbar region.
- Its low weight provides maximum mobility and easy handling in the laboratory.
- Seat height adjustment by gas spring.
- Seat swivel range of 360°.
- Solid black plastic star base, flat design.
- The chrome-plated foot ring provides support through the wide tread area and can be easily and quickly adjusted in height.

**-16%**

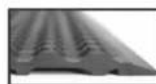
Description	Material	Seat height adjustment	PK	Cat. No.	Price	Now
		mm			GBP	GBP
Glides	PU Foam	510-780	1	6.288 956	<del>162.67</del>	<b>136.64</b>
Glides, Foot Ring	PU Foam	510-780	1	6.288 957	<del>203.29</del>	<b>170.69</b>

## Mat Hygiene grey



Premium rubber anti-fatigue mat.

- Shaped bevelled edges
- Silicone und Latex-free
- Suitable for use in cleanrooms of class ISO 5
- 3 years warranty



**-5%**

Description	Dimensions	Height	PK	Cat. No.	Price	Now
	mm	mm			GBP	GBP
Hygiene grey	600 x 900	11	1	4.665 404	<del>102.69</del>	<b>97.47</b>
Hygiene grey	900 x 1200	11	1	4.665 406	<del>210.92</del>	<b>200.37</b>

## Disposable gloves MICROFLEX® 93-360, Nitrile

EN ISO 374-1  
Type A

EN ISO 374-5

EN 421



JKLOPST



VIRUS



**Ansell**



- For Cleanroom
- Class ISO 5



Thin, chemical resistant disposable glove designed for cleanroom environments.

- Comfortable fit
- Ambidextrous
- Textured fingers
- Rolled edge
- Powderfree
- Chlorinated
- Carton with 10 bags of 50

According to EN ISO 374-1:2016/Type A (JKLOPST), EN ISO 374-5:2016 (VIRUS), EN 421

Colour: blue/green  
Thickness: 0.13 mm  
AQL: 0.65

**-30%**

Size	Length	PK	Cat. No.	Price	Now
	mm			GBP	GBP
S (6,5 - 7)	295	50	4.687 394	<del>37.19</del>	<b>26.03</b>
M (7,5 - 8)	295	50	4.687 395	<del>37.19</del>	<b>26.03</b>
L (8,5 - 9)	295	50	4.687 396	<del>37.19</del>	<b>26.03</b>
XL (9,5 - 10)	295	50	4.687 397	<del>37.19</del>	<b>26.03</b>

## Cleanroom wipes Clino® Wave CR, microfibre



**P PFENNIG**  
REINIGUNGSTECHNIK

Reusable microfibre wipe for all smooth surfaces in the cleanroom.

- Streak-free cleaning
- Excellent dust absorption without scratching the surface due to the special knitted structure
- Above average number of washes due to high quality finish
- Non-sterile
- Resistant to the usual cleaning agents and disinfectants on the market

**-11%**

Dimensions	Colour	Weight	Cleanroom Class	PK	Cat. No.	Price	Now
mm		g				GBP	GBP
350 x 350	white	45	ISO 7 - 8	50	6.325 064	<del>4.41</del>	<b>3.92</b>

## Overgoggles uvex super f OTG CR 9169



**uvex**



- Professional protection of products and humans
- First autoclavable protective overgoggles with anti-fog effect
- Sterile eye protection in every situation
- Autoclavable at least 10 times, 121 °C, 20 minutes
- Innovative design for maximum functionality and wearer comfort
- Overgoggles with unrestricted lateral vision
- Also suitable for use over prescription spectacles
- Non-allergenic material which is free of harmful substances
- Ultra-modern lens technology
- Extremely flexible soft ear pieces
- EN 166
- UV 400
- Weight 37 g

Coating uvex supravision clean.

**-25%**

Lens	Coating	PK	Cat. No.	Price	Now
				GBP	GBP
clear, UV 400, 2C-1,2	uvex supravision clean	1	6.268 419	<del>22.21</del>	<b>16.66</b>

## Adhesive Mats Sticky Mat

**ERGOMAT**



The Sticky Mat provides a fast, convenient, reliable way to clean shoe soles or other items before entering a clean and sanitary area. Sticky Mats significantly reduce traffic-borne contaminants.

Ergomat White Sticky Mats are produced in an 46 x 114 cm sheet, sold in pads of 30 sheets, with 10 pads per box (300 sheets total.)

**-5%**

Description	Colour	PK	Cat. No.	Price	Now
				GBP	GBP
Frame for Cleanroom mats Sticky Mat	grey	1	6.272 245	<del>68.40</del>	<b>64.98</b>
1 mat of 30 sheets	white	10	6.272 241	<del>89.10</del>	<b>84.65</b>
1 mat of 30 sheets	blue	10	6.272 242	<del>89.10</del>	<b>84.65</b>
Set of 10 mats of 30 sheets + 1 frame	white	1	6.272 243	<del>135.00</del>	<b>128.25</b>
Set of 10 mats of 30 sheets + 1 frame	blue	1	6.272 244	<del>135.00</del>	<b>128.25</b>





## Homogenisers T 25 easy clean

High-performance homogeniser with electronic speed control and a large variety of dispersing heads for many fields of applications.

- Quick and easy cleaning of the dispersing tools, no disassembling required
- USB interface for control and documentation via labworldsoft®
- Timer/counter function
- Increased safety through tool recognition and IP-Code

### T 25 easy clean control, additionally:

- Integrated temperature measurement for permanent monitoring of the medium temperature
- Remote control with WiCo

**Dispersing heads must be ordered separately.**

**All existing S 25 dispersing elements are compatible with T 25 easy clean digital.**



T 25 easy clean control

### Specifications

Motor rating input/output:	500/400 W
Working volume range (H:O):	1 ... 2000 ml
Viscosity max.:	5000 mPas
Speed range:	3000 ... 25000 rpm
Speed display:	LED
Speed control:	stepless
Noise without element:	70 dB(A)
Extension arm diam.:	13 mm
Dimensions (W x D x H):	89 x 161 x 270 mm
Weight:	3.0 kg
Power supply:	220 ... 240 V, 50 ... 60 Hz
Protection class DIN EN 60529:	IP 30

**-7%**

Type	Plug type	PK	Cat. No.	Price	Now
				GBP	GBP
T 25 easy clean digital	EU	1	6.291 622	<del>2,244.38</del>	<b>2,087.27</b>
T 25 easy clean digital	UK	1	6.325 670	<del>2,244.38</del>	<b>2,087.27</b>
T 25 easy clean digital	CH	1	4.691 823	<del>2,244.38</del>	<b>2,087.27</b>
T 25 easy clean control	EU	1	4.665 087	<del>2,763.18</del>	<b>2,569.76</b>
T 25 easy clean control	UK	1	4.691 825	<del>2,763.18</del>	<b>2,569.76</b>
T 25 easy clean control	CH	1	4.691 824	<del>2,763.18</del>	<b>2,569.76</b>

## Dispersing heads for T25 easy clean



S 25 N - 25 G

Stainless steel dispersing heads:  
Ultimate fineness: emulsions 1 µm to 10 µm and suspensions 5 µm to 50 µm, sterilisable by all methods.

**-7%**

Type	Diam. rotor / stator mm	Material	PK	Cat. No.	Price	Now
					GBP	GBP
S 25 N - 18 G	12.7 / 18	PTFE, AISI 316L	1	9.571 119	<del>1,167.08</del>	<b>1,085.38</b>
S 25 N - 25 G	17.0 / 25	PTFE, AISI 316L	1	9.571 200	<del>1,492.16</del>	<b>1,387.71</b>
S 25 N - 25 F	18.0 / 25	PTFE, AISI 316L	1	9.571 201	<del>1,575.32</del>	<b>1,465.05</b>

## Dispersiersystem ULTRA-TURRAX® Tube Drive P control



Tube Drive P control

Powerful motor for the best stirring, dispersing, grinding and homogenisation results, especially suitable for safe processing of infectious, toxic or odour-intensive samples.

- USB interface for experiment control and documentation
- Collecting tray for protection against leaking liquids
- Turbo button for short-term, intensive mixing, dispersing and grinding
- Adjustable reverse operation

### Scope of supply:

**ULTRA-TURRAX® Tube Drive P control:** Device, removal hook, plastic hose for drainage, USB cable, universal power supply with adapters EU/UK/US

**ULTRA-TURRAX® Tube Drive P control Workstation:** Device, 1 x ST-20, 1 x DT-20, 2 x BMT-20 G/S with glass/stainless steel balls, removal hook, plastic hose for drainage, USB cable, universal power supply with adapters EU/UK/US

### Specifications

Motor rating input/output:	36/28 W
Volume:	2 ... 300 ml
Speed range:	400 ... 8000 rpm
Timer:	10 s ... 30 min. (continuously adjustable)
Dimensions (W x D x H):	122 x 178 x 54 mm
Weight:	0.9 kg

**-7%**

Type	PK	Cat. No.	Price	Now
			GBP	GBP
Tube Drive P control	1	9.729 919	<del>1,471.37</del>	<b>1,368.37</b>
Tube Drive P control Workstation	1	9.729 917	<del>1,529.01</del>	<b>1,421.98</b>

## Dispersing tube for Dispersing system ULTRA-TURRAX® Tube Drive



**-5%**

Type	Description	PK	Cat. No.	Price	Now
				GBP	GBP
DT-20	with dispersing unit, 20 ml	25	9.570 507	<del>217.35</del>	<b>206.48</b>
ST-20	with stirring unit, 20 ml	25	9.570 508	<del>208.85</del>	<b>198.41</b>
BMT-20 G	with glass balls, 20 ml	25	9.570 509	<del>232.42</del>	<b>221.75</b>
BMT-20 S	with stainless steel balls, 20 ml	25	9.570 510	<del>232.42</del>	<b>221.75</b>
BMT-20-S-M-gamma	with stainless steel balls, 20 ml, sterile	20	6.274 088	<del>268.38</del>	<b>254.96</b>

## Sample bags SteriBag Premium, tamper-proof

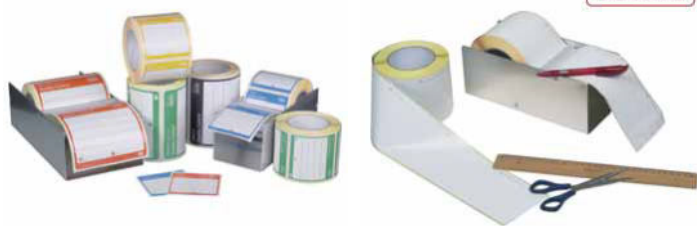


- Sterilised by gamma rays (10<sup>6</sup>)
- With integrated tamper-proof closure for manipulation evidence
- Unique identification via tracking number
- Food-safe

**-18%**

Nominal capacity	Width	Length	PK	Cat. No.	Price	Now
ml	mm	mm			GBP	GBP
300	145	200	100	9.404 126	<del>156.96</del>	<b>128.71</b>

## Control seals for sampling close-it



close-it food & pharma ensures aswell the necessary success when resealing sample openings, as it reliably prevents products from escaping after sampling. The adhesive complies with the European guidelines for foodstuffs and FDA guidelines.

**-16%**

Description	Colour	PK	Cat. No.	Price	Now
				GBP	GBP
Printed, 95 x 95 mm	Red	500	6.228 255	<del>59.54</del>	<b>50.01</b>
Printed, 95 x 95 mm	Green	500	9.303 998	<del>59.54</del>	<b>50.01</b>
Printed, 95 x 95 mm	Yellow	500	9.303 996	<del>59.54</del>	<b>50.01</b>
Printed, 95 x 95 mm	Blue	500	9.303 997	<del>59.54</del>	<b>50.01</b>
Printed, 95 x 95 mm	Black	500	9.303 999	<del>59.54</del>	<b>50.01</b>
Plain, 95 x 95 mm	White	500	9.303 986	<del>59.54</del>	<b>50.01</b>
Printed, 150 x 150 mm*	Red	250	9.303 990	<del>83.43</del>	<b>70.08</b>
Plain, 150 x 150 mm*	White	250	9.303 991	<del>83.43</del>	<b>70.08</b>
Printed, Roll, 150 mm x 150 mm*	yellow	250	9.304 000	<del>83.43</del>	<b>70.08</b>
Printed, Roll, 150 mm x 150 mm*	blue	250	9.304 001	<del>83.43</del>	<b>70.08</b>
Printed, Roll, 150 mm x 150 mm*	green	250	9.304 002	<del>83.43</del>	<b>70.08</b>
Printed, Roll, 150 mm x 150 mm*	black	250	9.304 003	<del>83.43</del>	<b>70.08</b>

\* close-it food & pharma Maxi

## Jars with screw cap, PP



Transparent, cylindrical, tall shape. Food-safe product according to regulation (EU) No. 10/2011.

**-29%**

Nominal capacity	Ext. diam.	Height	Neck thread	PK	Cat. No.	Price	Now
ml	mm	mm	GL			GBP	GBP
30	38	54	40	1	7.009 276	<del>5.09</del>	<b>3.61</b>
60	38	90	40	1	7.009 278	<del>6.43</del>	<b>4.57</b>
180	54	112	56	1	7.009 282	<del>9.19</del>	<b>6.52</b>

## All-layer zone collectors, stainless steel V4A



For sampling bulk goods of all types. With open inner tubes for cross-sectional sampling through all layers of the sample. Emptied via the open tube end of the sampler. Tube diameter: 25 mm.

Lock seal close-it and close-it food & pharma please order separately.

**-16%**

Chamber Capacity	Length	Imm. depth	Number openings	PK	Cat. No.	Price	Now
ml	cm	mm				GBP	GBP
260	150	1355	5	1	9.303 865	<del>824.62</del>	<b>701.08</b>
70	55	430	3	1	6.232 190	<del>601.25</del>	<b>505.05</b>
130	85	710	3	1	6.234 598	<del>693.27</del>	<b>582.35</b>

## pH Tester LIG-pH Pen



**Cost efficient pH tester**, ideal for testing small amounts of liquid and in narrow vessels. The supplied storage container prevents the electrode from drying out.

- ATC from 0 °C to 50 °C
- Large, easy-to-read LCD display
- **3-point calibration**

**Scope of supply:** pH meter

### Specifications

pH Measuring range:	0 ... 14
pH Accuracy:	±0.1
pH resolution:	±0.1
Dimensions with electrode (W x D x H):	36 x 20 x 210 mm
Dimensions electrode (diam. x L):	12 x 110 mm
Weight:	72 g
Power supply:	2 x 3 V CR2032 button cell
IP code:	IP 65
Warranty:	2 years

**-20%**

Type	PK	Cat. No.	Price	Now
			GBP	GBP
LLG-pH Pen	1	6.263 690	<del>23.69</del>	<b>26.95</b>

## LLG-pH buffer solutions with colour coding



The ready-to-use colour coded LIG-pH buffer solutions offer excellent quality, precision and are designed to suit all end user requirements. Supplied in 1 L bottles and conveniently colour coded to eliminate any risk of confusion between the 3 pH values.

- Accuracy ±0.01, tested and certified at 25 °C
- Temperature dependence data table printed on the label
- Traceable to NIST

**-20%**

pH-value at 25 °C	Colour	Capacity	PK	Cat. No.	Price	Now
		ml			GBP	GBP
4	Red	1000	1	9.040 865	<del>13.71</del>	<b>10.97</b>
7	Yellow	1000	1	9.040 866	<del>13.71</del>	<b>10.97</b>
10	Blue	1000	1	6.324 540	<del>13.71</del>	<b>10.97</b>

## pH/Redox meter pH 3110 Set SM PRO, LIG Premium Line, incl. pH electrode Sentix 41 and protective cover SM Pro.



The LIG Premium Line is our best selection of high quality and proven devices from our top suppliers. The meter pH 3110 Set SM PRO is ready-to-use for portable pH and Redox measurement.

- With proven, universal pH electrode Sentix 41
- Additional protection due to protective cover SM Pro made of silicone
- Waterproof according to IP67
- Automatic AutoRead function for reproducible and reliable readings
- 3-point calibration with technical or DIN/NIST buffers
- Integrated calibration timer for reminding to calibrate regularly

**Scope of supply:** pH meter pH 3110 ProfiLine, pH electrode Sentix 41, buffer STP 4/STP 7 (50 ml each), protective cover SM Pro, KCL solution, measuring beaker (50 ml), electrode holder, carrying case



### Specifications

Measuring ranges	
pH:	-2.0 ... 20.0 ; -2.00 ... 20.0 ; -2.000 ... 19.999
Accuracy:	±0.01 (±1 digit) ±0.005 (15 °C ... 35 °C)
mV/Accuracy:	±1200.0/±0.3 ±2000/±1
Temperature:	-5.0 ... 105.0 °C
Accuracy:	±0.1 °C
Temperature compensation:	automatic via pH electrode with integral temperature probe

### pH electrode Sentix 41

Plug type:	DIN
Temperature sensor:	NTC 30 kOhm
Length:	120 mm
Ø:	12 mm
Electrolyte:	Gel
Length cable:	1 m

**-29%**

Type	PK	Cat. No.	Price	Now
			GBP	GBP
pH 3110 Set SM PRO, LIG Premium Line	1	4.684 148	<del>739.89</del>	<b>525.26</b>

## LLG-Indicator paper sticks



For pH determination. Box of 100 indicator paper sticks of 80 mm length.

**-20%**

Range	PK	Cat. No.	Price	Now
			GBP	GBP
pH				
0 ... 14	100	9.129 807	<del>5.03</del>	<b>4.02</b>
0 ... 14	1000	4.667 571	<del>45.80</del>	<b>36.64</b>
5,5 ... 9	100	6.322 832	<del>4.70</del>	<b>3.76</b>
0 ... 6	100	6.322 833	<del>5.27</del>	<b>4.22</b>

## Core thermometer Testo 106

Ideal for quick, simple core temperature measurements in various fields. Wide measurement range and highly accurate. With Auto-Hold function for final reading. Includes sensor protection cap and battery. Calibration certificate on request.

The testo 106-T1 kit also contains a TopSafe protective case and a holster clip for belt or wall.



### Specifications

Temperature range (°C): -50 to 275  
 Accuracy ±1 digit (°C): ±1 % of m. value (100 to 275)  
 ±0.5 (-30 to 99.9)  
 ±1 (-50 to -30.1)  
 Resolution (°C): 0.1  
 Power supply: Lithium (CR2032)



Type	PK	Cat. No.	Price	Now
			GBP	GBP
Testo 106	1	9.718 208	<del>48.60</del>	<b>46.17</b>
Testo 106-T1 Kit	1	9.718 209	<del>53.10</del>	<b>50.45</b>
TopSafe protective sleeve (IP67)	1	9.718 232	<del>20.70</del>	<b>19.67</b>

## Data Logger EBI 20-T1

- Waterproof
- Visual alarm
- Max/min values on display
- Stores 40000 readings, can be read off at any time
- Replaceable battery



### Scope of supply:

**EBI 20-T1:** Temperature Logger  
**EBI 20-T1-Set:** Temperature Logger, evaluation software, Interface

### Specifications

Measuring range temperature: -30 to +70 °C  
 Accuracy temperature: ±0.5 °C (-20 to +40 °C); ±0.8 °C for remaining measuring range  
 Resolution temperature: 0.1 °C  
 Memory: 40000 samples  
 Operating temperature: -30 to +70 °C  
 Storage temperature: -40 to +70 °C  
 Measuring period: 1 minute to 24 hours  
 Power supply: 3 V lithium (CR 2450), can be replaced by user  
 IP code: IP 67  
 Housing : ABS  
 Dimensions (L x W x H): 69 x 48 x 22 mm  
 Weight: approx. 45 g



Type	PK	Cat. No.	Price	Now
			GBP	GBP
EBI 20-T1	1	9.908 069	<del>61.20</del>	<b>48.35</b>
EBI 20-T1-Set	1	9.908 073	<del>160.20</del>	<b>126.56</b>

## Wireless min./max. alarm thermometer type 13090



LUDWIG SCHNEIDER

Wireless min./max. thermometer for monitoring refrigerators and freezers for quality assurance.

- Three-channel temperature measurement
- Triple display for current, min./max. temperature, as well as indoor/outdoor and wireless temperature
- Adjustable Hi/Low alarm
- Battery status display

**Scope of supply:** Bottle temperature sensor with 1 m cable, wireless temperature sensor (transmitter)

### Specifications

Temperature range (internal): 0 ... 50 °C  
 Temperature range (external, wireless): -40 ... 50 °C  
 Temperature range (external, cable): -50 ... 70 °C  
 Accuracy: ±0.5 °C (-20 ... 50 °C), ±1.0 °C (>-20 °C and <50 °C)  
 Resolution: 0.1 °C  
 Wireless distance: 50 m (open field), 10 m (refrigerator)  
 Dimensions display (W x H): 79 x 66 mm



Type	PK	Cat. No.	Price	Now
			GBP	GBP
13090	1	6.325 021	<del>64.47</del>	<b>55.44</b>

## LLG-General purpose thermometers economy



Solid stem, with loop, capillary yellow enameled, graduation resistant against acids and alkalis. Red filling.



Measuring range °C	Graduations °C	Length mm	Diam. mm	PK	Cat. No.	Price	Now
						GBP	GBP
-10 ... 50	1	300	6	10	4.679 534	<del>24.59</del>	<b>19.67</b>
-10 ... 100	1	300	6	10	4.679 530	<del>24.59</del>	<b>19.67</b>
-10 ... 150	1	300	6	10	4.679 531	<del>24.59</del>	<b>19.67</b>
-10 ... 200	1	300	6	10	4.679 532	<del>24.59</del>	<b>19.67</b>
-10 ... 250	1	300	6	10	4.679 533	<del>24.59</del>	<b>19.67</b>



### LLG-Timer pro



The LLG-Timer pro can be used simultaneously as real time clock and timer. The countdown timer also runs when time is visible.

- Big 6-digit LCD display
- Digital stopwatch (counting up)
- Short timer (counting down)
- With memory function
- Stopwatch and countdown up to 23 h 59 min. 59 sec.
- Optical and acoustic alarm when timer expires
- Incl. magnet for mounting, hanging bracket and stand (fold-out)

Dimensions (W x H x D): 82 x 68 x 20.5 mm  
 Weight (with battery): 82 g  
 Power supply: 2 x AAA 1.5 V (not included)  
 Warranty: 12 months



Type	PK	Cat. No.	Price	Now
LLG-timer pro	1	6.311 351	<del>15.42</del>	<b>12.34</b>

### LLG-Dual-Timer, 2-channel



The LLG-Dual-Timer offers two separate timers in one instrument. One fixed time can be stored per channel.

- Big 6-digit LCD display
- Digital stopwatch (counting up)
- Short timer (counting down)
- With memory function
- Stopwatch with tenths of a second
- Stopwatch and countdown up to 99 h 59 min. 59 sec
- Optical (red LED) and acoustic alarm (2 volume levels), when timer expires
- Incl. magnet for mounting, hanging bracket and stand (fold-out)

Dimensions (W x H x D): 97 x 79 x 21 mm  
 Weight (with battery): 95 g  
 Power supply: 2 x AAA 1.5 V (not included)  
 Warranty: 12 months



Type	PK	Cat. No.	Price	Now
LLG-Dual-Timer	1	6.311 350	<del>17.44</del>	<b>13.95</b>

### LLG-Timer Triple pro



The LLG-Timer Triple pro offers three separate timers in one instrument. One time can be stored per channel. This Timer can be used simultaneously as real time clock and timer. The countdown timer also runs when time is visible.

- Big 6-digit LCD display
- Digital stopwatch (counting up)
- Short timer (counting down)
- With memory function
- Stopwatch and countdown up to 23 h 59 min. 59 sec.
- Optical and acoustic alarm when timer expires
- Incl. magnet for mounting, hanging bracket and stand (fold-out)

Dimensions (W x H x D): 68 x 88.7 x 16.2 mm  
 Weight (with battery): 87 g  
 Power supply: 2 x AAA 1.5 V (not included)  
 Warranty: 12 months



Type	PK	Cat. No.	Price	Now
LLG-Timer Triple pro	1	6.313 417	<del>17.44</del>	<b>13.95</b>

### LLG-Timer Cube



With 4 pre-set countdown times. Place the cube with the desired time facing up and the counting down starts immediately.

- Pulsing LED when timer is counting
- Automatically rotating flip display shows the remaining time
- After expiration, the elapsed time is displayed until the alarm ends
- Optional pre-alarm shortly before time expires

Dimensions (W x H x D): 60 x 60 x 60 mm  
 Weight: 58 g  
 Power supply: 2 x 1.5 V AAA (not included)



Type	Description	PK	Cat. No.	Price	Now
LLG-Timer Cube	5-15-30-60 minutes	1	6.291 217	<del>10.73</del>	<b>8.05</b>

## Precision balance PNJ

**KERN**



PNJ 600-3M

PNJ 3000-2M

With robust tuning fork weighing system for fast display of the weight value, accurate dosing and high mechanical load capacity.

- Models with internal calibration function and guaranteed high accuracy, thus location-independent and ideal for mobile, legal-for-trade applications.
- Capacity indicator: an increasing luminous band shows the still available weighing range
- The models have a removable, large glass draft shield and a weighing chamber of (W x D x H) 172 x 171 x 160 mm
- Large LCD display, digit height 16.5 mm
- Allowable ambient temperature range: 5 to 40 °C
- Universal power supply with adapters EU/UK/US

**-26%**

Type	Capacity	Readability	PK	Cat. No.	Price	Now
	g	g			GBP	<b>GBP</b>
PNJ 600-3M	620	0.001	1	6.270 591	<del>855.00</del>	<b>632.70</b>
PNJ 3000-2M	3200	0.01	1	7.643 634	<del>801.00</del>	<b>592.74</b>
PNJ 12000-1M	12000	0.1	1	7.644 987	<del>783.00</del>	<b>579.42</b>

## Semi-micro- and analytical balances Cubis® II

**SARTORIUS**



Modular premium balances for research and development or analytical laboratories.

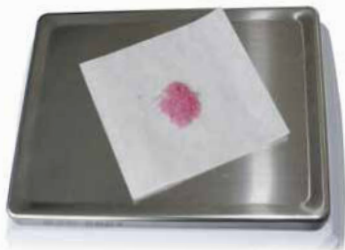
- Monolithic weighing system
- Seamless connectivity to diverse laboratory information systems without the need of additional software
- Integrated climate sensor
- Status center notifications
- Full data integrity following ALCOA+ principles
- Supports all requirements for FDA directive 21 CFR part 11 and EU Annex 11 compliance
- Complete traceability via advanced audit trail and reporting function
- Automatic motorised leveling
- Automatic glass draft shield with integrated ionizer
- Large 7" color touch display
- Various QApp packages for optional software extension

**-5%**

Type	Capacity	Readability	PK	Cat. No.	Price	Now
	g	mg			GBP	<b>GBP</b>
225S, MCA	220	0.01	1	4.670 853	<del>19,107.00</del>	<b>18,151.65</b>
224S, MCA	220	0.1	1	4.670 852	<del>12,284.10</del>	<b>11,669.90</b>
524S, MCA	520	0.1	1	4.670 879	<del>15,138.00</del>	<b>14,381.10</b>

## LLG-Weighing paper

**LLG**  
LABWARE



- Not treated with nitrogen during production
- Smooth surface
- 45 g/m<sup>2</sup> paper
- Block of 500 sheets

**-20%**

Dimensions (D x W)	PK	Cat. No.	Price	Now
mm			GBP	<b>GBP</b>
76 x 76	500	6.272 246	<del>16.61</del>	<b>13.29</b>
102 x 102	500	6.272 247	<del>19.11</del>	<b>15.29</b>
152 x 152	500	6.272 248	<del>25.09</del>	<b>20.07</b>

## LLG-Weighing dishes, aluminium

**LLG**  
LABWARE



Made from oil-free, lightweight aluminium. With a flanged, crimped wall for rigidity. Finger-tab handle can be etched for identification prior to weighing.

**-20%**

∅	Height	Thickness	PK	Cat. No.	Price	Now
mm	mm	mm			GBP	<b>GBP</b>
43	12	0.3	100	6.238 138	<del>8.60</del>	<b>6.88</b>
57	14	0.3	100	6.238 139	<del>9.68</del>	<b>7.74</b>
70	16	0.3	100	6.238 140	<del>12.44</del>	<b>9.95</b>
101 *	8	0.3	50	6.236 854	<del>12.58</del>	<b>10.06</b>

\* without Finger-tab handle

## Test tube shakers Multi Reax

Versatile test tube shaker with a 3 mm shaking orbit.

- Short-time and continuous operation
- Variable speed range
- Timer function from 1 to 999 minutes

**Scope of delivery:** Test tube shaker incl. 2 attachments.

- Attachment for 26 vessels with diameters from 10 mm to 16 mm
- Attachment for 12 vessels with diameters from 16 mm to 32 mm

### Specifications

Type of movement:	orbital
Orbit:	3 mm
Speed range:	150 ... 2000 rpm
Power consumption:	50 W
Permissible ambient temperature:	5 ... 31 °C
Permissible relative moisture:	80 %
Dimensions (W x D x H):	270 x 410 x 172 mm
Power supply:	230 ... 240 V/50/60 Hz
IP code:	IP 30



**Large digital display**

**-6%**

Type	Plug type	PK	Cat. No.	Price	Now
				GBP	GBP
Multi Reax	EU	1	9.839 810	<del>1,420.20</del>	<b>1,334.99</b>
Multi Reax	UK	1	6.204 223	<del>1,420.20</del>	<b>1,334.99</b>
Multi Reax	CH	1	6.491 906	<del>1,420.20</del>	<b>1,334.99</b>

## Rocking Shakers SHRK series



- **Overload protection**
- **Spill-Resistant Design**



07AL2



04DG

The rocking shaker is ideal for cell culture and blotting applications.

- Variable control of speed, tilt angle and time.
- The two-stage model 07AL2 doubles the working capacity
- Flat design
- Timer
- Suitable for CO<sub>2</sub> environment
- Universal power supply with adapters EU/UK/US

### Scope of supply:

**07AL1/04DG:** Shaker incl. built-in tray with non-slip rubber mat

**07AL2:** as 07AL1/04DG, additionally incl. second tray with screws and mat

### Specifications

Type of movement:	rocking
Rocking angle:	0 to 15°
Timer models analogue/digital:	1 to 120 min/ 1 s to 160 h
Permissible ambient conditions:	-10 to +60 °C
Power supply:	230 V, 50/60 Hz

**-25%**

Type	Display type	PK	Cat. No.	Price	Now
				GBP	GBP
07AL1	analogue	1	4.659 476	<del>861.08</del>	<b>645.81</b>
07AL2	analogue	1	4.659 477	<del>932.46</del>	<b>699.35</b>
04DG	digital	1	4.659 481	<del>1,021.69</del>	<b>766.27</b>

## Shaking Incubators ISLD



- **Overload protection**
- **Spill-Resistant Design**



The Microplate Shakers are optimized for shaking microplates, deep-well plates, or micro-tubes.

- LED displays for temperature, speed and time
- Timer with audible alarm
- Temperature calibration mode
- Soft start
- Heat warning indicator
- Polycarbonate lid
- Universal power supply with adapters EU/UK/US

### Scope of supply:

**04HDG:** Shaking Incubator incl. built-in tray and lid

**MPHDG:** Shaking Incubators incl. built in tray for microplates, deep-well plates, or micro-tubes and lid

**MPHDGL:** as MPHDG, but with opaque lid



04HDG

### Specifications

Temperature range:	ambient +5 °C to 65 °C
Temperature uniformity:	±0.5 °C at 37 °C
Speed/Accuracy:	100 to 1200 rpm/±2 %
Timer:	1 s to 160 h
Orbit:	3 mm
Max. Load:	3.6 kg
Orbital shaker:	4 microplates or
Microplate shaker:	2 racks for microtubes
Permissible ambient conditions:	5 to 40 °C
Power supply:	230 V, 50/60 Hz

**-22%**

Type	PK	Cat. No.	Price	Now
			GBP	GBP
04HDG	1	4.659 471	<del>2,216.36</del>	<b>1,728.76</b>
MPHDG	1	4.659 473	<del>1,951.08</del>	<b>1,521.84</b>
MPHDGL	1	4.659 472	<del>1,951.08</del>	<b>1,521.84</b>

## LABORTOPS

### Magnetic stirrer Hei-PLATE Mix 'n' Heat Core+, LLG Premium Line, incl. temperature sensor Pt1000 with holder, support rod and silicone cover

-  **Complete set**
- Hot warning indicator**

The LLG Premium Line is our best selection of high quality and proven devices from our top suppliers.

#### Convincing quality

- The sealed housing protects the electronic and mechanical components from aggressive chemicals and liquids
- The patented Kera-Disk® hot plate made of anodized aluminum is chemical-resistant, scratch-resistant and allows fast heating rates

#### Excellent functionality and best user comfort

- Accurate to the degree adjustment of the desired hotplate temperature by turn-push-button
- Precise setting options and monitoring of the device parameters via the digital display
- Fast and precise temperature control without overshoot via two selectable heating modes (FAST/PRECISE) and the Pt1000 temperature sensor
- An illuminated button indicates clearly if the stirring mode is activated

#### Highest safety

- In case the heating function fails, stirring will not be discontinued to prevent bumping
- The locking function protects against accidental changing of the values
- An independent second safety circuit switches off heating in case of any overtemperature situation
- Overheating protection by a safety circuit that switches off heating if the temperature sensor is not immersed in the media vessel
- Optical residual heat warning at temperatures >50 °C

**Scope of supply:** Magnetic stirrer Hei-PLATE Mix 'n' Heat Core+, temperature sensor Pt1000 (V4A), holder for Pt1000 (incl. support rod, retainer with cable guide), silicone cover

#### Specifications

Stirring quantity (H <sub>2</sub> O):	20 l
Speed range:	100 ... 1400 rpm
Heating power:	800 W
Temperature range:	20 ... 300 °C
Permissible ambient temperature:	5 ... 31 °C
Permissible relative moisture:	80 %
Plate material:	Kera-Disk®
Plate dimensions:	Ø 145 mm
Dimensions (W x D x H):	168 x 299 x 101 mm
Weight:	3 kg
Power supply:	230 V
IP code:	IP 42

Type	Plug type	PK	Cat. No.	Price	Now
				GBP	GBP
Hei-PLATE Mix 'n' Heat Core+	EU	1	6.490 528	<del>770.40</del>	647.14
Hei-PLATE Mix 'n' Heat Core+	UK	1	6.325 676	<del>803.00</del>	674.60
Hei-PLATE Mix 'n' Heat Core+	CH	1	6.325 675	<del>801.78</del>	673.50

